

The Cley Hill Villages

Benefice Profile

Heytesbury Deanery



**Diocese
of Salisbury**
Making
Jesus Known

Introduction from the Bishop of Ramsbury

Welcome!

Thank you for your interest in the post of parish priest in the beautiful Cley Hill Villages: part of the See of Ramsbury in the Diocese of Salisbury. For a priest who is passionate about the future of the rural church, this is a super opportunity for creative ministry in churches blessed with wonderful buildings and willing teams, within one of the most beguiling landscapes in Wiltshire.

The ancient see of Ramsbury, covering much of that county, is rich in spiritual heritage, from the cathedral city of Salisbury and the valleys of its five rivers, up to the Marlborough Downs. God is in this place – even though many know it not – and it offers an enriching context for ministry and mission today.

I am looking for devoted and visionary clergy, who can inspire and guide our communities in Making Jesus known. While this can appear a timeless landscape, our parishes are constantly changing and face all the challenges and opportunities of life in the 2020s. Because of this, the church must also change in order to grow, renewing its traditions for the contemporary situation.

In the Diocese of Salisbury, we place a high value on the encouragement and pastoral support of our parish clergy and, should God guide you to serve here, you will become part of a committed and collaborative team.

Please contact the Ramsbury office if you need any assistance with your enquiry and be assured of my prayers as you seek the Lord's will for your future.

Sincerely in Christ,



The Diocese of Salisbury

The Diocese of Salisbury covers most of Wiltshire and Dorset under Bishop Stephen Lake with two suffragan bishops: Andrew Rumsey and Karen Gorham.



Archdeaconry

The Ven Louise Ellis was appointed Archdeacon of Wilts in March 2025 covering Wiltshire and Salisbury.



A message from Archdeacon Louise

Thank you for your interest in the Cley Hill Benefice. As will be clear as you read through this profile there is a great deal to commend this post. If you would like to have an informal conversation, please don't hesitate to contact me at ADwilts@salisbury.anglican.org and we can arrange a time to speak. Alongside all that this particular benefice has to offer I can assure you of supportive and collaborative deanery and diocesan colleagues. Salisbury is a wonderful diocese to minister in, and I warmly encourage you in your prayerful discernment.

The Ven Louise Ellis

Heytesbury Deanery

The Deanery consists of 20 parishes in 7 benefices, with 32 churches.

The Rural Dean is the Rev. Clifford Stride.

Profile Summary

- The profile will introduce you to the Benefice, its churches, location, and people.
- Explain what we are looking for in a priest to help us develop and grow as a church.
- There will be details about the Benefice with its six churches in two Parishes (note only 2 PCC's).
- Our experience in our Vacancy, engagement with schools and communities.
- A view of our vision for the future.

A Welcome from the Benefice

We have been in Vacancy for some 2 ½ years, yet we have not been standing still. We have been actively engaging with the schools and village communities, despite the challenges faced by rural parishes. The vacancy has resulted in more collaborative working between the two parishes and between members of our small PCCs. We continue to be supported by a number of retired clergy from the Deanery.

As a possible precursor to wider developments in the Benefice, we are receiving very effective targeted support from the Diocese Church Buildings Community Enabler, in the area of community engagement, and this is already bearing fruit. The Diocesan mission Making Jesus Known, is driving us to reconnect with younger generations and to address the downward trend in our congregations. We need guidance and leadership from our new priest, to build on the work we have started.

Our rural benefice extends over a large area, with many small villages and communities. This is a challenge for any new incumbent, but we will work closely with them in providing support and finding opportunities.

We hope that this profile will inspire you to explore whether God is leading you to join us.

With prayers and best wishes, from the members of our Benefice PCC's



What are we are looking for in our new priest, they should be:

- Collaborative, open-hearted priest who is inclusive and will enjoy working with the us to develop our rural benefice.
- Able to inspire, lead and guide us towards growth, through developing fresh ideas to help us with our mission in the community.
- Open to encourage and support the development of lay and ordained ministry.
- Enthusiastic and dedicated to the development of our relationship with the children at our local schools.
- Sympathetic to the needs of our many older members and their contribution to our church life.
- Committed to providing a range of traditional and contemporary liturgy.
- Open to collaboration and be a fluent communicator, comfortable with traditional and social media.
- At ease working with a team of committed lay members across our benefice.

The Cley Hill Villages Benefice

The Benefice lies between the historic cities of Bath and Salisbury in beautiful countryside largely within the Cranbourne Chase Area of Outstanding Natural Beauty. It's proximity to the towns of Warminster, Frome and Mere offer excellent local amenities — schools, shops, doctors, dentists and vets, easily available. The area is well served by the A36 and A350, with good access to the arterial A303. There are well served main line train stations close by with nationwide connections and a daily coach service to London from Frome and Warminster.

The Benefice covers approximately 25 square miles of countryside comprising downland, woodland and farmland. It is made up of largely rural communities with mixed arable and stock farming. Local inhabitants also commute or work from home and there are historic military connections. The river Deverill rises above Kingston Deverill and flows through the Deverill Valley, which is mostly rolling chalk downland with wooded coombes around Crockerton, into the River Wylfe. The villages of Corsley and Horningsham surround the major leisure attractions of Longleat House, and Safari Park, with a Center Parcs Holiday Village on the wider estate. The village of Chapmanslade sits on a greensand ridge spanning the main road between Westbury and Frome on the northwest edge of the Benefice. Driving around the area is easy, within the Benefice, with no journey taking more than thirty minutes from one end of the Benefice to the other, unless a herd of cows needs to cross one's route!

We hope you will consider this post, and if you are the person whom God has chosen to come here, we look forward to sharing ministry with you. If you have any questions, please don't hesitate to get in touch; deverillsllm@btinternet.com



Cley Hill Villages Benefice: Churches, Schools and the Rectory

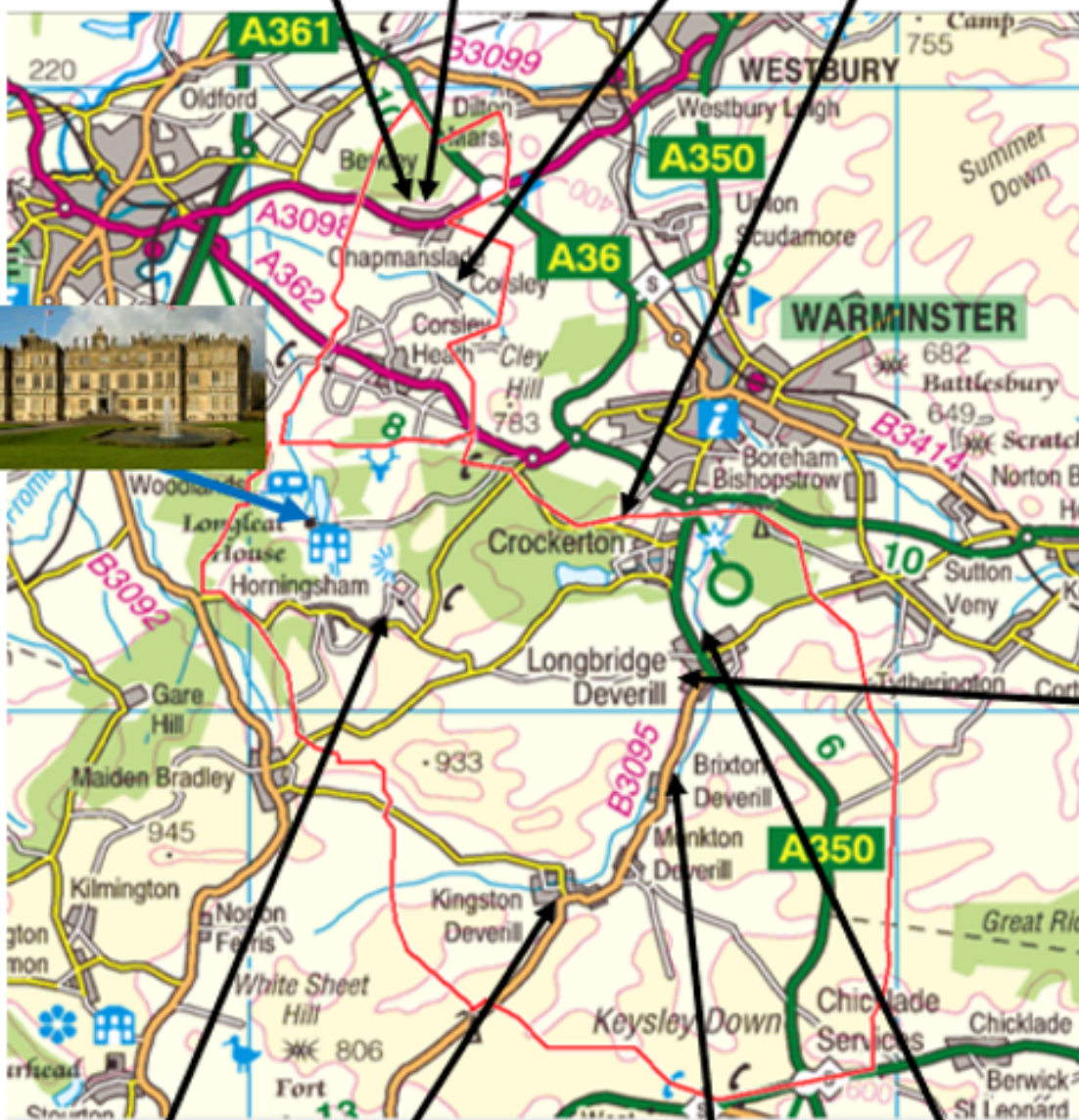


Chapmanslade School

Chapmanslade

Corsley

Crockerton School



Horningsham



Kingston Deverill



Brixton Deverill



Longbridge Deverill

The Parish of The Deverills and Horningsham

Lying predominantly in the Cranborne Chase Area of Outstanding Natural Beauty, the parish of the Deverills and Horningsham comprises a population of approximately 1,800 inhabitants within 3 civil parishes, each with their own Parish Council;

- **Horningsham**
- **The Upper Deverills, consisting of Kingston Deverill, Monkton Deverill and Brixton Deverill**
- **Longbridge Deverill, Hill Deverill and Crockerton**

There are three village halls across the parish—Longbridge Deverill, Kingston Deverill and Horningsham. There is a service at one of the 4 churches each Sunday, with a BCP eucharist held on the first Sunday of the month as well as Morning Worship. If there is a fifth Sunday in the month a Benefice eucharist is held on rotation between the parishes. The congregation moves between the four churches. During the interregnum the PCCs have worked to deliver the Benefice mission and several retired priests have given their time to continue the normal schedule of services. Music is provided in the Deverill churches by a Hymnal, a local volunteer organist and occasionally by visiting organists.

The Deverills & Crockerton Parish News is a church publication containing details of church services, information on local organisations, advertisements for non profit making events in the valley and elsewhere. The Parish News is delivered to every house in the parish as part of our outreach.

Kingston and Monkton Deverills

The civic parish of Kingston Deverill, which since 1934 has included the village of Monkton Deverill, is part of the Deverill Valley. There is a strong connection with King Alfred, and his famous battle against the Danes at Edington. The Upper Deverills Village Hall is used regularly by many groups (including PCC Meetings) and hosts a 'pub night' on the last Friday of each month. Alongside the Village Hall is the cricket field used by the Upper Deverills Cricket Club.



Church of St Mary the Virgin



Carol service, Kingston Deverill

The Church of St Mary the Virgin, Kingston Deverill

The church was largely rebuilt in the 1840s, although the Tower dates from the 14th century. The Tower has 6 bells that are 'chimed' by hand. The church has a Saxon Font which was rediscovered having been buried in the churchyard, and there are a number of carvings and monuments including a fine 14th century Flemish wood carving of Madonna and Child.

Brixton Deverill

Brixton Deverill has approximately 65 people living in the village, many of whom are retired, but more recently some younger families have joined the community. Agriculture is the main industry with arable and stock farming predominant.



*St Michael the Archangel,
Brixton Deverill*



Interior, Brixton Deverill Church

The Church Of St Michael the Archangel, Brixton Deverill

This is the smallest church in the parish. The chancel dates from the 13th century, but the church was considerably reworked in the mid 19th century. In keeping with its rural setting, this church lends itself to quiet and contemplation. The church contains some fine wood carvings and a Norman Font which came from the church in Imber. Its picturesque setting makes it popular for smaller weddings.

Longbridge Deverill, Hill Deverill and Crockerton

Longbridge Deverill, Hill Deverill and Crockerton are separate but adjacent villages. Crockerton and Hill Deverill churches closed several years ago. The church of St Peter and St Paul in Longbridge Deverill lies between Longbridge and Crockerton. Longbridge Deverill village hall is some 50yds from the church and has its own committee. Adjacent to Longbridge Deverill village hall lies the James Thynne Almshouse which is administered by a board of trustees and provides bedsit accommodation for four fee paying residents over the age of 55 from within the parish.

Longbridge Deverill has a pub, The George, where there is a monthly community coffee morning, a service station with a small shop and a residential Care Home. Crockerton has a Church of England Primary School, a garden centre, furniture store, gym and a pub, The Bath Arms Shearwater.

Shearwater lake part of the Lingleat Estate lies between Crockerton and Horningsham and provides facilities for anglers and dinghy sailing. The surrounding woodlands here and elsewhere in the area provide excellent walking.

The Church of Saint Peter and Saint Paul at Longbridge Deverill

This is the largest church in the parish. The oldest part is of mid 12th century origin, the south aisle was rebuilt in the 14th century, whilst the whole church was restored and enlarged in the 1860s. The Bell Tower has 8 bells that are rung regularly. The church contains the Bath Chapel under which lies the crypt of the Thynne family of Lingleat which used to be in the parish. The church has some interesting furnishings, beautiful stained glass windows and a children's corner.



St Peter & St Paul, Longbridge Deverill



Interior, Brixton Deverill Church

Crockerton School

Crockerton Church of England Voluntary Aided Primary School is in the parish and has 82 pupils, who work in four mixed age classes. The children come from the local villages, Warminster and beyond.

Our Christian values underpin school life, recently the Bishop of Ramsbury opened a school extension. The school has a broad and balanced curriculum, which has been the focus in the School development plan for the last 2 years. The school nurtures strong partnerships with parents, governors, and the wider community and is well supported. Worship for the whole school takes place three times a week.

The school has a dedicated RE subject leader, who also leads our Church School Values curriculum (PSH) and is also our Mental Well-Being leader. The school use Longbridge church for services.



Crockerton School



Community Carols at The George

Horningsham

Horningsham is a more widely dispersed village, the majority of which is owned by the Longleat estate, and has a population of approximately 350. It has a busy, popular pub, the Bath Arms. There is a large village hall which is in regular use for the thriving Luncheon Club, cooking weekly for 40 pensioners, keep fit, monthly coffee mornings and the Monday evenings games night. There are also active Cricket and Football Clubs. In the village is a Congregational Chapel thought to be the oldest congregational chapel in England that is still open for worship, founded in 1556, the date on the building, but more likely around 1700.

The village school is close to the Church and has around 80 pupils. Although not Church aided the school it maintains active links with the church and uses it for services, including the annual leavers service and the Carol Service. Recently the parish has been invited to work with the children on 'Faith'.

The monthly Horningsham News magazine, delivered free to every household, keeps all the residents informed about life in their village.

The Church of St John the Baptist Horningsham

St John the Baptist Church was founded in 1154 but largely rebuilt firstly in 1783 and then again in 1844 when it was enlarged to make room for an expanding population. Built by the Thynne family of Longleat, it was intended as a place of worship for the many estate workers. A small but active congregation remains today and keeps the building and churchyard in good order.

Key services during the year are Christmas Day and Plough Sunday when the Morris Men attend. Rogation with an open-air service on a farm takes place each year on one of the farms in the parish and Horningsham takes a turn. On Remembrance Sunday there is a service at the war memorial. These services attract a wider congregation from further afield.



Church of St John the Baptist



Plough Sunday, Horningsham

The Parish of Corsley and Chapmanslade

With a population of some 1,300, the villages of Chapmanslade and Corsley are about 1 mile apart and lie in the middle of a triangle of the towns of Westbury, Frome and Warminster. Corsley, which is made up of 11 hamlets on either side of the A362, is situated close to the Longleat Estate and the Somerset border. Chapmanslade is a large village occupying about a mile of the road between Westbury and Frome. There has been, and still is, a strong connection with farming and horticulture in the area. Small businesses exist in both villages, but neither village has a shop. However, there are three pubs across the Parish. Both villages are socially very active and their occupants very supportive of one another. There is a church school in Chapmanslade and pre-schools in both villages.

Corsley

Corsley is a widespread rural village within the Cranborne Chase & West Wiltshire Downs Area of Outstanding Natural Beauty, it was once part of the ancient Forest of Selwood. National Trust owned Cley Hill, the site of an ancient British Fort is a prominent landmark in the east of the parish. Agriculture is still a major feature of parish life and in the past the wool industry was of much significance. Today, most residents commute to work in local towns or are retired. Local employers include Centre Parcs and Longleat together with a number of smaller businesses. Despite the scattered settlement pattern there is a strong and supportive community spirit, with an active WI, tennis and other sports clubs, a reading room which hosts many social occasions including a monthly coffee morning. The church community organise both a monthly Lite Bites lunch and coffee morning in the Reading Rooms and are open to everyone. There is a lovely community wildflower meadow close to the church. Primary school children attend Chapmanslade School or other local primaries in the benefice and secondary education is provided at Kingdown School in Warminster. There have been a few new houses built in Corsley, mainly for local people.

St Margaret's, Corsley

St Margaret's, a site of worship since the 12th century, is the largest of the Parish churches and the present church dates from the 1830s. There are 2 services each month, a Common Worship Eucharist service and a Matins service. It enjoys a regular congregation of about 15 for Sunday worship and is occasionally nearly full to its 300 capacity for larger services such as weddings and funerals. The church has a set of bells that are regularly rung by a dedicated team of ringers. The church has a small kitchen and two toilets. We have a part-time organist. Internet facilities and other related equipment is being installed to make the church more usable by the community. The church has good acoustics and is used for a local choir's rehearsals and concerts, who provide a modest income from the rent of the building.



Church of St. Margaret



The Bell Tower Team



Christmas Tree Festival

Chapmanslade

Chapmanslade is situated a mile north of Corsley, straddling around a mile of the main road between Westbury and Frome. The village is largely a dormitory village for people working in nearby towns and beyond. Horticulture is a significant employer and there is a small industrial estate. The village is growing with a 42-house development built within the last three years. There is a café and entertainment space on a former golf club on the edge of the village. There is also a complex of luxury holiday homes just outside the village.

Chapmanslade has a strong community spirit; it has a popular village hall which hosts a wide range of community events, including a pantomime, music evening and many meetings of organisations like the Brownies and Guides. A women's group (the "Loose Women") meets to participate in a full range of social activities and events. Each month, too, the pub hosts the church and community coffee morning, giving everyone in the village another opportunity to meet socially.

There is a church organised activity called 'Crafternoons' once a fortnight, where all are welcome to bring their own craft projects to work on, in a supportive and creative atmosphere.

St Philip and St James', Chapmanslade

Designed by renowned Victorian architect George Street, construction began in 1866 and the church was consecrated on 1st May 1867. Situated in the centre of the village with the school next door, the church and school have a very close relationship. Average service attendances are around 20, with considerably more coming to special services which include end of term school, harvest and Christmas crib services. There are two regular services a month, a Common Worship Eucharist service and a family orientated Praise & Worship service, begun during this vacancy and which is continuing to evolve. We do not have a regular organist so pre-recorded music is played via one of the two sound systems. We are receiving significant support from the Diocese Church Buildings Community Enabler, who has engaged with both the congregation and School community, resulting in the expansion of joint activities with Chapmanslade School and plans for wider community uses for the Church building.

We have ongoing plans to redevelop the church with three aims; To create a more welcoming space for everyone, to provide facilities which support our mission in the community and to satisfy the need in the village for a place to hold smaller meetings and events. The first step was replacing some of the listed pews with chairs, creating a much more flexible space. A temporary toilet has been installed. Ongoing projects include a permanent toilet, and the relocation of the font to accommodate a kitchenette, partly funded by a significant donation from the village Parish Council. The work already undertaken has resulted in its use for both social events and as an overflow facility for school activity. These are providing the beginnings of an income stream. Internet facilities and other related equipment has been installed to aid the delivery of inclusive services as well as make the church more usable by the community. Fund raising is supported with the use of an on-line donation device.

There is a 24 hour free access Church Porch Food Bank, providing some essential food items to anyone who may need them.



Church of St Philip & St James



Gathering following Remembrance Service

Chapmanslade Church of England VA Primary School (now part of Acorn Education Trust)

The 100 pupil village school sits together with the Church and Busy Bees Pre-school in the centre of the village.

The most recent SIAMS inspection which took place in October 2024 reported:

'Collective worship takes place at the start of each afternoon.'

'Leaders in school work with local retired clergy and members of the parish church to build a worship plan. This includes dramatic retelling of Bible stories, songs, prayer, class worship and times for reflection. This enables worship to be joined to the wider Anglican tradition and brings them to the heart of the local worshipping community.'

'Pupils are enthusiastic contributors to the design and leadership of worship.'

'Regular events in the local parish church are extremely important to parents, pupils and staff. The relationship with the local parish is warm and neighbourly.'

Additional work is under way to further grow the school and church activities in ways which are aimed at reaching young families in a co-operative environment.

Parish wide activities

The two villages have a monthly magazine called The Bridge, which is delivered free of charge to all houses in the villages. The church uses its central pages to communicate all our essential information with everyone in the parish. The PCC has a strong fund raising team which coordinate various parish wide activities through the year. The Benefice runs a Messy Tent and attends various village events including our May Fair and Corsley Fair.

Benefice Finances

Our 6 historic churches are Grade 2 listed and valued by our communities, but require significant maintenance costs. They are supported financially with their own parish 'Friends of their Churches' and planned giving schemes. Both parishes have met their share requirement for 2025.

Details of the Benefice Diocesan Share and our payments are at Annex A.



Clergy and Support

The Cley Hill Benefice, with its 2 parishes, mostly work independently of each other, but they do share resources and join together for Benefice services in 5 week months and major festivals.

There are 2 retired priests who live in the parish of Corsley and Chapmanslade, who occasionally lead Sunday worship and Eucharist services, baptisms, wedding and funerals services throughout the Benefice. There is one Lay Minister in the Deverills and Horningsham who leads worship, both in his own parish but occasionally throughout the Benefice, and conducts funerals in all the churches. Each parish has its own active PCC with secretary and treasurer.

In Corsley and Chapmanslade's two churches there are one churchwarden and two deputy church wardens. In the Deverills and Horningsham's four churches there are three with churchwardens and one church with a team of 5 couples who are deputy church wardens and serve a month at a time.

Safeguarding

The Benefice Safeguarding Officer ensures we comply with all requirements.

Rectory

Details of the Rectory, which is located near the middle of the Benefice in Longbridge Deverill may be seen at Annex B.

Conclusion

Thank you for reading our Parish Profiles which should give an indication of Worshiping Community activity, the churches, schools, amenities and geography of our area. We have remained active through our Vacancy and now seek the opportunity to grow.

If you require detail of our Benefice they may be found at www.cleyhillchurches.org

Or contact our LLM at deverillsllm@btinternet.com



Annex A to Cley Hill Benefice Profile, January 2026

Benefice Finance

The Benefice has 2 Parishes each with their own PCC and Treasurer. Historically the Benefice has paid its full Share contribution to the Diocese (or very close). At the end of 2025 there were no Share arrears and full Share was paid.

Cleyhill Benefice	Share Request £	Share Paid £	2nd Year Vacancy Rebate	%
Benefice 2024	79,090	70,710		89.4%
Corsley and Chapmanslade	36,280	28,000		77%
Deverills and Horningsham	42,710	42,710		100%
Benefice 2025	78,525	62,992	15,533	100%
Corseley and Chapmanslade	36,159	30,101	6,058	100%
Deverills and Horningsham	42,366	32,891	9,475	100%

The Rectory – Longbridge Deverill (BA12 7DQ)

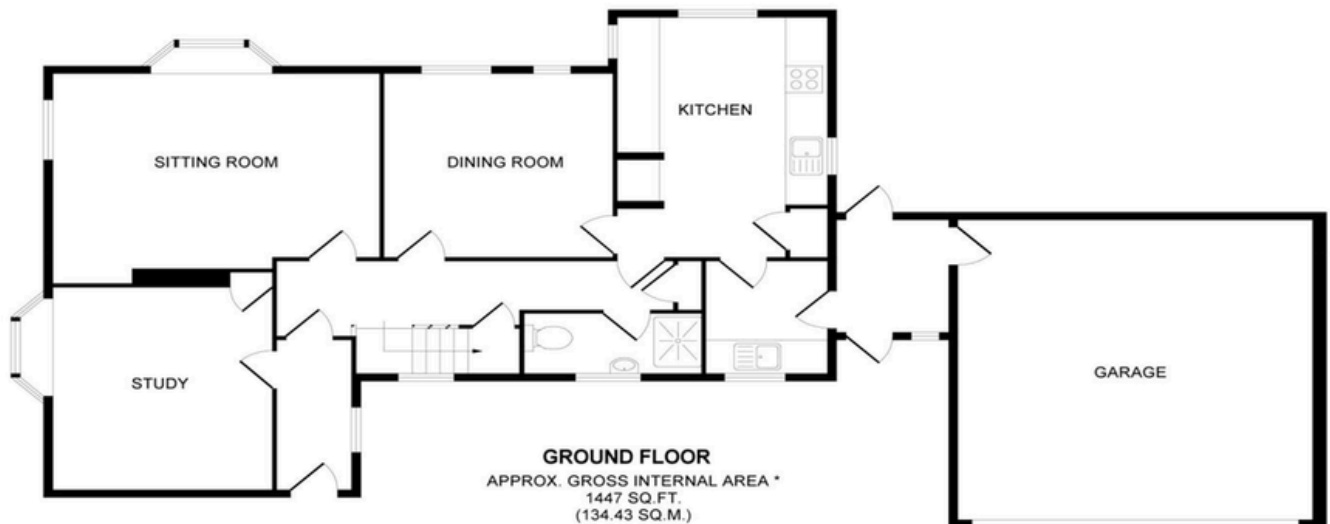
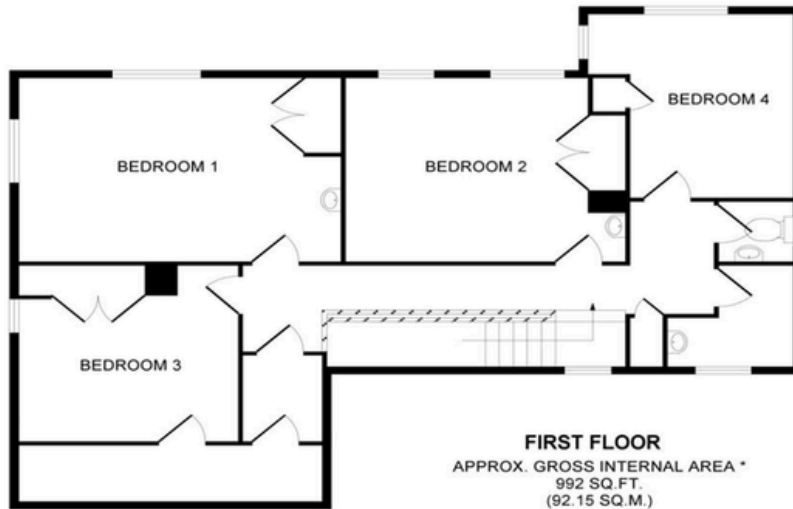
The four-bedroom house was built in 1973 and its design reflects the style of that period although it has been regularly modernised in recent years. It stands in a large south facing garden with views across the Deverill Valley over farmland up to Lord's Hill. There are some mature trees but otherwise it is rather empty, offering a keen gardener the opportunity to create a garden of their own taste.

Comfortable family accommodation is provided with a large sitting room, dining room, study, toilet, shower and modern kitchen on the ground floor with three double bedrooms and a single bedroom and bathroom and toilet upstairs. A new shower has been added upstairs where the wash basin seen in bedroom 2 is on the plans. The house has been regularly maintained.

The house stands at the end of a cul-de-sac adjacent to several bungalows and mainly small houses, all built around the same period and is close to (but not too close to) The George, a thriving pub, which stands on the main road, opposite which is a filling station and shop which is open daily. The church of St Peter and St Paul, the largest church in the valley and the focus of many of the principal services is a 10 minute walk away. Longbridge Deverill Village Hall is located in the lane leading to the church.



Rectory Floor Plans



TOTAL APPROX. GROSS INTERNAL AREA 2439 SQ.FT. (226.59 SQ.M)

Illustration For Identification Purposes Only. Not To Scale