



BENEFICE OF

# West Purbeck

PROFILE  
for the appointment of a

BENEFICE  
MISSIONER





## Contents

Contents .....	2
Foreword by the Bishop.....	3
Introduction from the Vicar .....	4
The West Purbeck Benefice map .....	5
Clergy team .....	6
Lay ministry team .....	9
Who are we looking for? .....	10
Your home. ....	11
The four parishes of the Benefice .....	13
The schools of the Benefice.....	26
Service schedule for February 2025.....	30
West Purbeck Benefice Prayer .....	31

[www.westpurbeck.org.uk](http://www.westpurbeck.org.uk)



## Foreword by the Bishop of Sherborne



Ministry in Dorset is a joy and a delight. In recent years significant changes have been made in the way clergy are supported and encouraged, and parishes and posts re-configured for mission, leading to a greater sense of collegiality between our towns and villages.

In the Purbeck Deanery, there is a renewed sense of working together. And therefore, whoever comes to fill this vacancy does so at an exciting time. With lay ministry teams and an established and committed incumbent we have established the post of fulltime Benefice Missioner to build on the many opportunities there are for new ministry.

Working within a supportive team of lay and ordained leaders, we hope the role will enable someone, committed to outreach and a mixed ecology of church, to broaden the opportunities we have for making Jesus known, particularly amongst visitors and our military families.

The Benefice Missioner will also be expected to play their part in the ongoing ministry of the benefice, bringing their own gifts and skills to helping individuals grow in faith, and to encourage worshipping opportunities for families and young people.

This role would suit someone who wishes to use their missional and evangelistic gifts alongside others, someone who felt as much at home with those on the fringes of church life as well as with committed to it, and who felt called to a ministry on the margins.

The West Purbeck Benefice enjoys beautiful countryside yet are within easy reach of sandy beaches and a stunning coastline. The larger towns of Dorchester and Poole are within easy reach, as is the market town of Wareham. The railway station gives access to going further afield with links to London Waterloo, Bournemouth and Weymouth. Should you like to know more please do not hesitate to contact me or the Revd Canon Richard Bartlett, Vicar for more information.

Bishop Karen      (01747 811960)



## Introduction from the Vicar of the West Purbeck Benefice

Dear potential new colleague,

Thank you for your interest in the exciting new post of Benefice Missioner in the beautiful and diverse West Purbeck Benefice. We are praying that God's chosen person will come and join us here, as we play our part in His mission in this place. West Purbeck is a rural holiday area of South Dorset between Wareham to the east and Dorchester to the west, and between the A35 in the north and the Jurassic Coast, a World Heritage Site, in the south. Alongside much beauty are not just our seven churches, but four primary schools, a special school, several community halls, two Army bases, large engineering workshops, a science and technology park, a railway station accessing London Waterloo, and many large farms. People live in the large village of Wool, the area of Bovington, the smaller villages of Bere Regis, West Lulworth and Winfrith Newburgh, and many hamlets scattered around. Our seven medieval churches are in the villages of Wool, Bere Regis, Affpuddle, Winfrith Newburgh, East and West Lulworth and Chaldon Herring.

Amidst the iconic views, large agricultural estates and picturesque cottages, there is also rural poverty and social housing. We are discerning God's will for mission and ministry here, as we respond to the Salisbury Diocesan mission to 'Make Jesus known'. The benefice is almost co-terminus with the West Purbeck local government ward: for statistics from the 2021 census on area please see: [West Purbeck \(E05012728\) - ONS](#)

Following the recent retirement of two part time priests we are seeking one new full-time priest to work alongside myself, Rev Jenny Alidina, SSM part-time Associate Priest, and Rev Lydia Reese, full-time Curate, ordained Deacon in 2024, along with a full range of lay ministers: LLMs, LWLs and LPAs. The new priest will be called 'Benefice Missioner' and will live in a new house recently bought by the diocese in Bere Regis, to the north of the benefice. They will have a particular focus in four areas of mission and ministry in the benefice:

- To build up the church community in Bere Regis, seeking to deepen connections with the life of the village, grow and diversify the congregation, enabling the church there to fulfil its mission to be a parish church for all.
- To discern and build a church community in Bovington. Alongside the army community, there is a large civilian population which has no connection with the church. An opportunity to start something from scratch with the support of benefice colleagues and the Army Padre.



- To build a seasonal ministry in West Lulworth. Thousands of people come to this part of the benefice in the holiday season, and we seek to connect with them alongside residents.
- To offer and develop your own area of expertise in ministry, sharing with the ministry team in pastoral care, in the leading of worship, and the many occasional offices across the benefice.

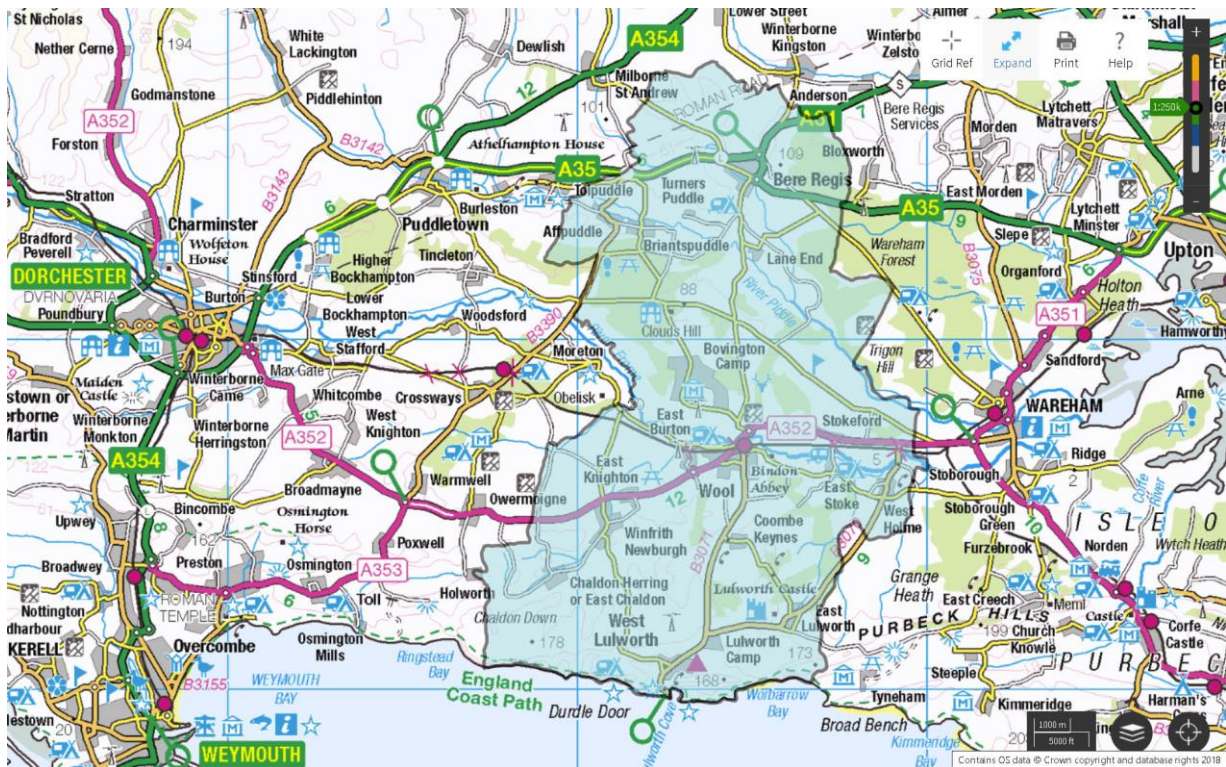
If this role excites you, please get in touch with me for a chat. The following pages in this profile introduce those who you would work with, a flavour of the lives of our churches, communities and schools, and details of the house where you will live. Be assured, that if you are the person chosen to come here, you will be made very welcome!

With my prayers as you embark on this discernment process alongside us,

Richard 07711 701910 [vicar@westpurbeck.org.uk](mailto:vicar@westpurbeck.org.uk)

The Revd Canon Richard Bartlett

Vicar of the West Purbeck Benefice and Rural Dean of Purbeck



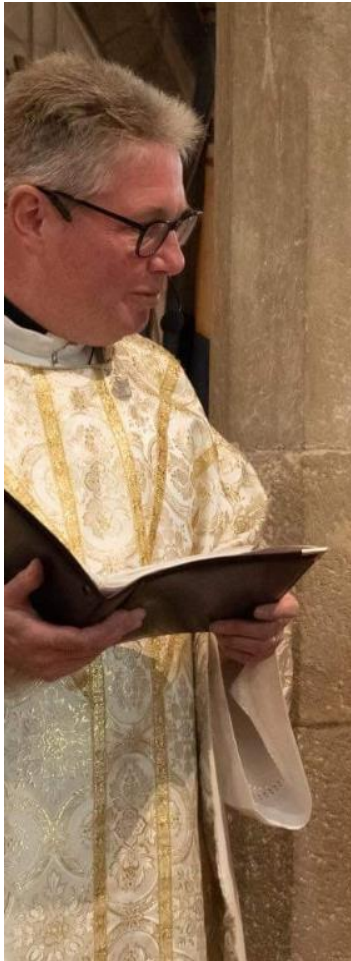




## Clergy team:

You will work with a friendly, supportive and energised clergy team, with varying roles and strengths in ministry, who looking forward to working with a new clergy colleague.....

### Rev Canon Richard Bartlett, Vicar



As Vicar of the benefice I have responsibility for leading mission and ministry across the benefice. Ordained 30 years ago and serving my curacy in the neighbouring parish of Wareham, I have travelled from Wareham to Wool the long way round: via London and Brazil: in parish ministry, school chaplaincy, cathedral ministry, and with the mission agency USPG. I moved here in April 2022 and became Rural Dean in September 2023.

I passionately believe that the whole church has an active part to play in God's mission in every community; that we are here to serve the whole community in the name of Christ, and that holistic mission as viewed through the Five Marks of Mission is a model for parish ministry.

I am committed to our engagement with schools, which is the primary place of mission with children and their families here. We have fantastic opportunities for leading worship in both church and non-church schools. I am Chair of Governors of one of our church schools. The benefice, in its current form, is still relatively new, and a focus of my ministry is to build cohesion between the seven churches and four parishes of which it comprises.

I am married to Jenny and we have three young adult children at university and beyond.



There are many wonderful locations for worship here: one of the best is Lulworth Cove beach where we hold an annual Benefice Easter Day Eucharist.



## Rev Jenny Alidina. SSM Associate Priest



I have been ordained for 17 years and have always worked in rural ministry and served in the dioceses of Oxford, Winchester and Salisbury. I live in Stoborough, near Wareham and was delighted to be licensed as Associate Priest for the West Purbeck Benefice at its inauguration, having served in all the parishes over several vacancies since 2014. I chose to work in this Benefice because everyone is very friendly and supportive, and I love them. Due to many family commitments, I work 2-3 days a week and generally 2 Sundays a month.

As well as taking regular services, I have a passion for new ways of being and doing church. I have run Café Church at Winfrith Village Hall with an excellent team since 2018. This format includes thematic preaching, film clips, drama, lively discussion, prayer and songs. We attract a gathered congregation from across the Benefice and beyond and are currently studying Signs and Wonders in John's gospel and the practical application to our lives.

I lead the Experience Event group which runs biannual/termly events in Holy Rood Church, Wool for all the Wool Primary School children through interactive presentations in several installations within the church. We have just run Experience Advent. The children look forward with great anticipation to these events and it would be wonderful to be able to offer this in other primary schools in the Benefice. I am also involved in an after-school club called eXplore at Wool Primary School which as its name implies explores various biblical themes in a fun and lively way.

Our Benefice holds between 10 and 14 weddings or marriage blessings a year in our beautiful churches. I co-ordinate the initial processes for these services and organise an annual Marriage Preparation Session. This is an exciting ministry with couples who are often new to church. Marriage services are shared between the Benefice clergy team.

I am married to Naj and have two grown up children, and one delightful grandchild as well as a highly strung schnoodle (dog) called Charlie. I enjoy reading and am a keen member of the West Lulworth Players - we are currently rehearsing for the pantomime Beauty and the Beast where I play a highly strung poodle!

This is a lovely place to work, and Richard and Lydia are excellent colleagues. What are you waiting for - apply!



## Rev Lydia Reese, Curate



Thank you for your interest in our team! My name is Lydia, I am a first-year curate in West Purbeck. I was deaconed in Salisbury Cathedral June 2024 after three years studying at Sarum College. I have been very much enjoying the first six months of my curacy here getting stuck in with such a varied ministry, and I have had a very warm welcome. I especially enjoy the collaborative aspects of working with others together in our benefice, and I have learned a lot in a short space of time! I am excited to continue learning and growing here.

A highlight has been getting involved with four of our schools both for assemblies and with our two enthusiastic Open the Book teams. My background is in wildlife conservation, and I have also been enjoying learning about the conservation work going on in the Bere Regis area with various community groups and the Wildlife Trust. I am keen to explore this further and build the church's links with what is happening in the wider Bere Regis community. I did my MA at Sarum on eco-theology and churchyards and it's been very interesting to reflect further on this bit of practical theology now that I am on the ground in ministry.

I am originally from the mountains of East Tennessee in the United States. I'm married to Jimmy, who is a vicar and hospital chaplain, and we live in Dorchester. I look forward to meeting you!  
All the best,  
Lydia







## Lay ministries

### Jenny Hunt (LLM, Wool)

Jenny Hunt is based in Wool. She shares in preaching, leading the Ministry of the Word, funerals, and is licensed to officiate in Holy Communion by Extension.

### John Matthews (LLM, Wool)

John is also based in Wool. He is a home group leader, member of the Open the Book team, shares in preaching, and plays the organ in Wool monthly.

## Lay Worship Leaders

Pat Wharf (Bere Regis)

Sue Marsh (The Lulworths)

Sarah Welton (Bere Regis & Affpuddle)

Peter Wharf (Bere Regis and online)

Giles Marsh (The Lulworths)

Marion Barker (online)

## Lay Pastoral Assistants

Gren Irwin (Wool)

Pauline Matthews (Wool)

Jackie Percy (Bere Regis)

Sue Ealden (Wool)

Val Wilson (Wool)

Pat Wharf (Bere Regis)

Peter Wharf (Bere Regis)

Ted Cox (Bere Regis)

Frances Mussell (Wool)



Commissioning of  
West Purbeck  
Benefice Lay  
Pastoral Assistants,

1<sup>st</sup> October 2023,

St. John the Baptist  
Church, Bere Regis



## Who are we looking for?

We don't know what you are like yet, but we have asked around, and people from our churches have identified the following characteristics which we are hoping for in our Benefice Missioner:

### Essential

A mission focussed priest, with a drive to share the Good News of Jesus Christ to all in our communities, through word and action.

A desire to lead in holistic mission as received by the Anglican Church through the Five Marks of Mission.

A team leader and team player in varying situations.

An ability to relate to people from a range of backgrounds and ages, both inside and outside of the church.

To be a visible presence across the benefice, with a pastoral heart, willing to engage personally with people in need.

At home leading both traditional and contemporary styles of worship.

An inspiring preacher and teacher, with an ability to relate the Gospel to a variety of contexts.

### Desirable

Experience of building or working with a new church community.

Experience of the church in a military community.

Experience of church finances, stewardship and fundraising.

Rural and/or seaside church experience.

### Plus some suggestions from our school children: 'We want someone....

.....who isn't shy in front of crowds and who is kind and helpful to everyone.

..... who can lead interesting assemblies and who is easy to listen to.

..... who has good jokes and can make us laugh sometimes.

..... who is generous with their time and who likes being with children.

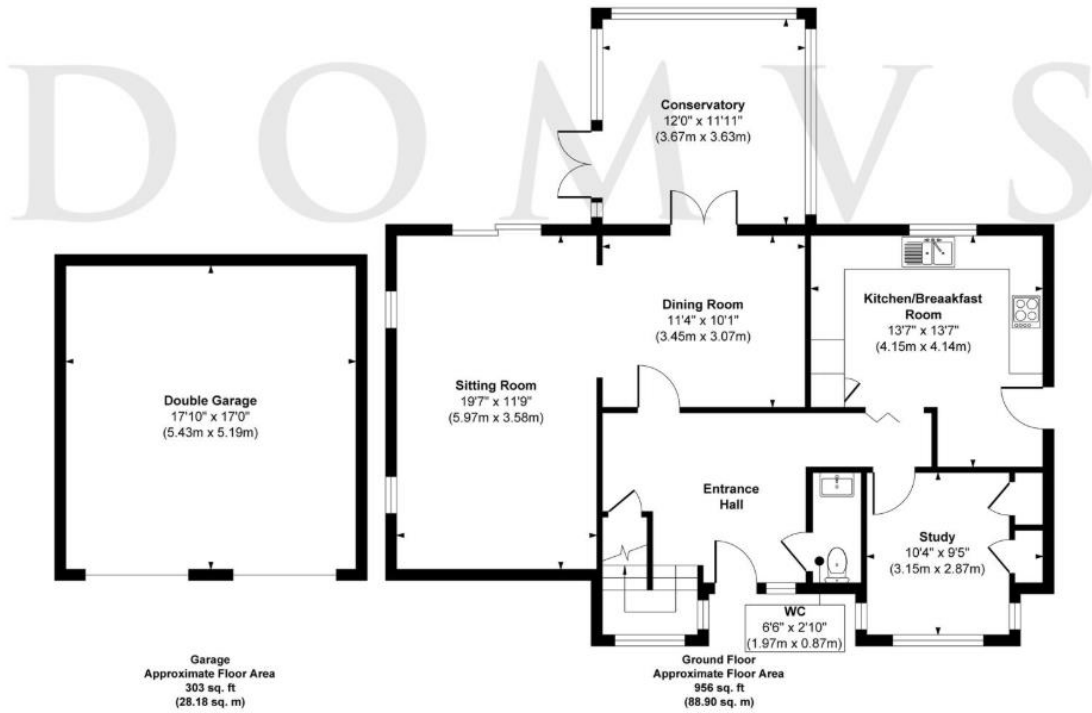
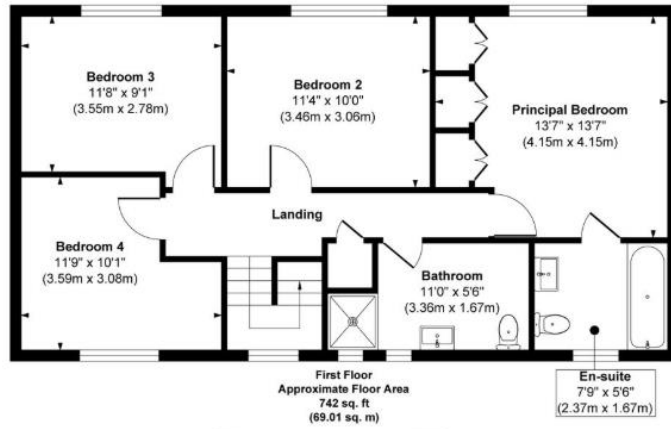




## Your home.

The Diocese has recently bought 9 White Lovington, Bere Regis BH20 7NF to house the Benefice Missioner. Situated on the south side of Bere Regis, within close walking range of Bere Regis Primary School and the village centre, the house is of vicarage size (4 bedrooms, separate study etc), with a private garden, backing onto fields.

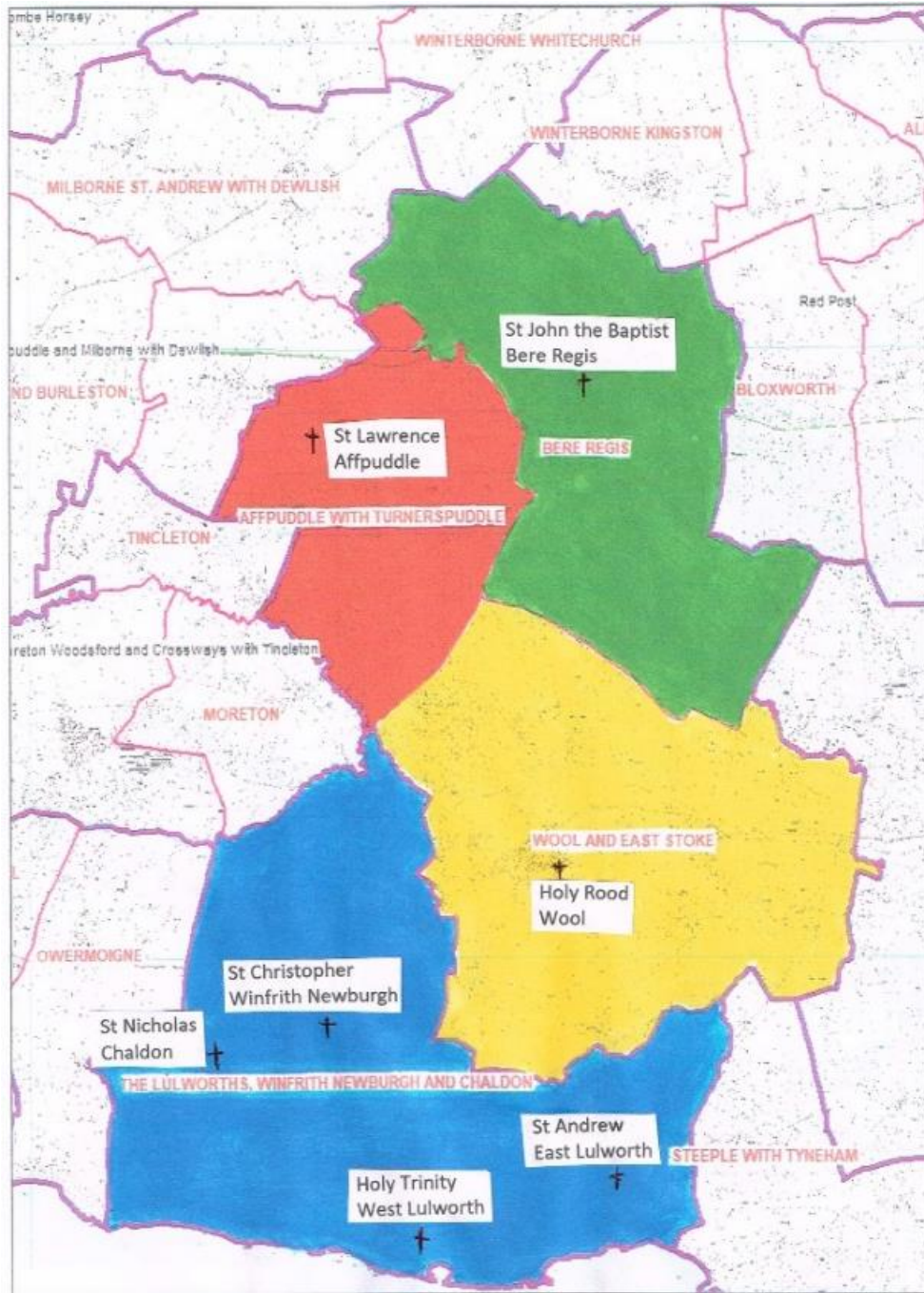




Bere Regis is a village of approx. 1700 people, with a village shop, village hall, two pubs, a primary school, an active Scout group, a GP surgery and dentist, a petrol station, many community activities, and is surrounded by beautiful countryside.



## The four parishes and seven churches of the West Purbeck Benefice



**WEST PURBECK BENEFICE**



### ***Our Benefice...***

As a benefice we share a Benefice Office, based in Wool, where Eve Baker, our Administrator, works 11 hours per week. Once a quarter we hold a Benefice Eucharist, when all of our church communities are invited to come to worship together. Our Benefice choir and Benefice band, the 'Beneficials' lead the music at these services. We share Open the Book teams across two parishes. We are part of Purbeck Deanery and join with other parishes in the deanery for lay training, confirmations etc. in addition to Deanery Chapter and Synod.

### ***Our Parishes...***

#### **The Parish of Bere Regis**

Bere Regis was a market town until the late 19<sup>th</sup> century. It lies midway between Poole and Dorchester, at the intersection of the A31 and A35. A by-pass keeps some traffic away from the village centre.

The parish has a greater social mix and a higher percentage of social housing than Purbeck generally. It retains many of the features of a traditional rural Dorset village, with a strong link to the agricultural sector, and fewer holiday cottages and second homes than other Purbeck areas. 105 new homes are planned. There is a village shop, two pubs, and a primary school. The Dorset Wildlife Trust has a wildlife reserve and offices here, and the Scouts are active in the village.



With a good range of ages, there are many clubs and activities in the village. Many are held at the village hall, including the Friday morning community cafe (Pop in Place - aka PiP) which also organises charity pantomimes twice a year. There is a good relationship with the Scouts, who are particularly involved in Remembrance





Day events. The Scout Hut is also used by many other community groups, including the Salt and Pepper club, which is an OAP type monthly lunch club. Many of our congregation are part of the Volunteer Car Scheme which helps residents without transport to get to appointments.

For more information about our village, see the monthly Parish Magazine and Bere Regis village website: [www.bereregis.org](http://www.bereregis.org)

### St John the Baptist Church

The Parish Church of St John the Baptist is Grade 1 listed, dating back to the 11<sup>th</sup> Century. It is large, capable of seating around 250 people, and the interior owes much to a major restoration completed in 1875. The building is famous both architecturally and for its literary connections. There are frequent tourists coming to visit the church for its mediaeval wooden nave roof with painted figures of what are generally accepted to be the twelve apostles, and for its depiction by Thomas Hardy in 'Tess of the D'Urbervilles'.

In addition to our many visitors, the Electoral Roll is 76 and our worshipping community is approximately 30. The congregation consists mainly of middle aged and older people from the parish itself. A small number of children, younger families and other members of the regular congregation attend the monthly family service which uses large puppets to engage with the children.

Every Thursday morning we host "Tea and Toast," where we welcome visitors, neighbours, and often dogs! This is an important part of our mission to engage with our community outside of our regular churchgoers.

We have a keen Open the Book team which runs sessions at Bere Regis Primary School as well as Wool Primary School. This has been going for several years now and is popular with pupils and staff at the school, and good relationships have built up as a result.



The building is in reasonable condition. Over the last decade, a large programme of repairs and refurbishment has been necessary, at a total cost of over £350,000. Much of the money raised has been from various grant providers but around a quarter came from our own local fund raising.



Finances are not in good shape in this parish: the Parish Share has not been paid in full for many years. The number of people committed to the Parish Giving Scheme is very small. A major stewardship campaign will have been started before the appointment of the Benefice Missioner, but there will be much work to continue to build on this in the coming months and years.

There is a fine organ and six bells restored in 2014. Our bell-ringers practice weekly and the bells are rung at services, weddings and events of national importance. Our very active Sanctuary Flower Guild ensure the church is decorated year round. We have volunteer teams for cleaning and for churchyard maintenance. The churchyard was closed for burials in the late 19th Century. Wildlife areas are managed with advice from Dorset Wildlife Trust, and there is a churchyard trail.

There is no separate church hall, but the kitchen area is used for refreshments after services, and for soup lunches, harvest suppers, afternoon teas for booked tour parties, etc. Normally, the church is open to visitors in daytime. There are outside toilet facilities.



Fund-raising events include our Summer Fete, Christmas Bazaar, Wine and Cheese evenings, quizzes, and in the past have included fundraising concerts and art, flower and craft festivals. An orange hurtle race on the river in Spring, when the river is flowing fast, is great fun!

In summary we are a vibrant village with many thriving community organisations. We need a priest who will ensure the church is engaged with our wider community and firmly at the centre of village life.



## **The Parish of Wool and East Stoke, incorporating Bovington, East Stoke and Combe Keynes.**

### **Wool**

Wool is a welcoming, thriving village. Despite recent significant housing development, it maintains a village sense of community. There are very many clubs, societies and activities for all ages - from youth club to carpentry, from Scouts to Keep Active for over 50s, mostly based in either the D'Urberville Hall, Wool, or the East Burton Hall. Villagers help each other - from The Guerilla Gardeners, who keep the village areas looking lovely, to Share and Care, a group of voluntary drivers who take house-bound neighbours to medical appointments.



Wool Primary School is a CofE voluntary aided school. The school grounds back onto the churchyard and there is an excellent relationship between the school and the church, with the pupils using the church building regularly and church volunteers involved with Open the Book, the eXplore after school club, and events. There is also a Roman Catholic primary school in Wool which is affiliated with the Catholic church.

Wool is identified as suitable to help fulfil Dorset's housing quota and is now by far the largest Benefice village. The Holy Rood Parish population is over 6,000 (including Coombe Keynes and East Stoke). Over 3,000 live in Wool, and roughly 2,500 in Bovington. The church is in the oldest part of Wool, at its eastern edge. Wool has developed to the west, especially around the railroad in the 20<sup>th</sup> century, and recently the 2012 Purbeck Gate development added over 200 homes. Current proposals could build up to 800 more in various areas.

Wool has a number of shops and businesses, as well as the Royal Legion and several churches. Just outside of Wool, an industrial site houses the Dorset Police Headquarters, a green technology park, and various businesses.

### **Bovington**

Bovington is a major centre for armoured vehicles training. The MoD and its contractors provide local jobs in the engineering workshops, and civilian support. A full time Army Chaplain, The Rev'd Andy Pessoa, is resident at Bovington Camp, and is responsible for the spiritual welfare of all Army personnel and families in Bovington and Lulworth Military Camps.

While most of Bovington is 'behind the wire,' requiring a security check and pass to access, there are numerous community groups and gathering places outside the





garrison. A selection of these include shops such as Poppy's Cafe and the Bovington Community Stores, the frequently used Memorial Hall and Garrison Welfare Support Centre, as well as volunteer-run Bovington Community Garden. In terms of groups, there is good provision for children and young people, including council run Sure Start groups and a youth club, as well as Army Cadets and a bi-weekly community toddler group.

The Tank Museum is a local gathering place in addition to being a tourist attraction, with its cafe and restaurant, as well as tank demonstrations. The annual Remembrance Service at the Tank Museum is the main act of Remembrance for the garrison and wider community and is a well-attended and significant event.

Bovington has a state primary school, Bovington Academy, as well as a state special school, Harbour School, for pupils with autism (ASC) and social and mental health (SEMH) needs. There is an RAC Saddle Club providing equine therapy and riding lessons, mainly to soldiers and their families, and also to veterans.

### **East Stoke, Coombe Keynes, and East Burton**

East Stoke is a scattered area of housing to the east of Wool with a population of 170. The church in East Stoke has been converted to housing, though the churchyard is still in use. Coombe Keynes is a village between Wool and Lulworth with 280 residents. The church in Coombe Keynes is redundant. East Burton is a small area of housing with a redundant church to the west of Wool.

### **The Church of The Holy Rood**



The church building is Grade 2\* Listed with a capacity of about 130, and is in a good state of repair. We have 106 members on the Electoral Roll. Pews at the rear of the church were removed to create a flexible space for worship, welcome, other activities such as Messy Church, and a kitchenette. The church is kept open daily. Its main problem as a building lies in its limited access. A steep slope up to the church is unsuitable for wheelchairs. There

is no dedicated car park, although the school nearby allows use of their car park and access at weekends. Adjacent to the church building is an accessible toilet and storage facility.



We aim to be 'A church without walls'. As such and because we have no church hall, we hire the D'Urberville Hall, in the centre of Wool, for Holy Communion on the 1<sup>st</sup> and 3<sup>rd</sup> Wednesday of each month, for other commemorative services (eg. Carol Services and Coronations) and for fund raising and social events.



Home groups are held throughout the year. Home Communion is administered by the Lay Pastoral Assistants. There is an on-line Benefice Morning Prayer Group on 4 week days at 8.30 a.m.

Holy Rood's PCC and Standing Committee meet in alternate months. All required posts are filled. We receive very generous monthly donations through banks, the PGS scheme, and fees from weddings and funerals. However finances are tight, so our hard-working social group plan many social and fund-raising events.



**Voluntary, Social and Fund-raising** - The church has a wide range of volunteers, the Maintenance Team, the Flower Arrangers and the Cleaners all have rotas and keep the church building looking bright and cared for.

We have a very active, albeit ageing, social group who organise many events - from monthly breakfast clubs, to fund-raising quiz nights, from pancake lunches to Christmas tree festivals, from concerts in the church to the annual 'Teas and Teddies' event.



Holy Rood was awarded a £1,500 grant from Dorset Council to provide a warm space and hot meal, monthly, for anybody to attend. This takes the form of 'Soup and Pud' on the 1<sup>st</sup> Wednesday of the month. The meal is free, but all donations are welcome. This is held in the D'Urberville Hall.



The church has an active Bell Ringing Team. There are six bells which are rung for Sunday services and numerous other occasions.

## **The Parish of Affpuddle, with Briantspuddle and Turnerspuddle**



The parish has a total population of around 450, the nucleus settlement being Briantspuddle, midway between Affpuddle and Turnerspuddle. This was mainly built as a model farming village by Sir Ernest Debenham in 1920 to 1935. There is a well-used village hall and small social club at Briantspuddle. The pre-existing granary is used as a shop and Post Office, open each morning and manned by volunteers.

The estate houses were sold in 1952, hence now most of the village and parish is in owner-occupation. There are about 25 social housing properties in the parish and a small number of holiday homes. Property prices are such that younger people with families struggle to buy here but there is still a reasonable mix of ages. Children travel by bus to Puddletown for primary and middle school and to Dorchester for Years 9 to 13.

### **St Laurence Church, Affpuddle**



St. Laurence Affpuddle (Grade 1 listed) is largely of 13th century origin but has been extensively restored over the last 150 years. It is capable of seating 120. There is a small vestry and kitchen at the western end. The installation of toilet facilities is underway at last. The churchyard is open for burials.





Most services are Eucharistic. Average attendance at Affpuddle services is 20. We have 11am Holy Communion on the 1<sup>st</sup> & 3<sup>rd</sup> Sundays of the month, Morning Praise at 10am on the 2<sup>nd</sup> Sunday led by a LWL and BCP Holy Communion at 9am on the 4<sup>th</sup> Sunday. Turnerspuddle church is redundant and owned by the Debenham family. There is no electricity but there are occasional services there with the owners' consent.



Our fundraising events consist of a summer fete (often in the beautiful garden of a private home), a Gift Day and Cream Tea, an occasional flower festival, a concert organised by our organist and a stall at the Village Hall Christmas Fayre. All are well supported by Church members and others.

## The Parish of the Lulworths, Winfrith Newburgh and Chaldon Herring

The parish is made up of four churches: St Andrew, Holy Trinity, St Nicholas and St Christopher. The parish has one PCC with representatives from each church, but only one churchwarden at the moment. Each church also holds its own church committee.

### St Andrew's, East Lulworth

East Lulworth is a small village dominated by Lulworth Castle, a popular visitor attraction. There is a population of 160 with approximately 10% school age or younger. It is the home of the Weld family whose estate of 20 square miles includes the Castle and Lulworth Cove. Consequently, local employment is predominately farming and tourism.

An enthusiastic group of church goers make up the church committee and ensure the building is clean, well-presented and loved. There has been a church on site since 1320.

St Andrew's is often referred to as a pilgrim church due to the high volume of people who include the church as part of their visit to the Castle and Park. Lulworth Castle is a popular venue for wedding receptions and St Andrew's is often used for the marriage service. This provides an excellent



opportunity for mission amongst wedding couples and their families.

The building is in good condition and most of the work has been completed as set out in the last Quinquennial report. The share has been paid. The average congregation for the monthly service of Holy Communion (BCP) is 18-20. Typically, there are 8 weddings a year, 2 baptisms and 2 funerals.

The church is also used for the occasional Art Exhibition and once a year the building is used for music workshops during Camp Bestival (20,000 people on site).

For a small village, the church is very much alive with signs of growth.

## Holy Trinity, West Lulworth



West Lulworth is part of the famous Jurassic Coast which includes Lulworth Cove and Durdle Door, and is visited by hundreds of thousands of visitors every year. Our farming and fishing community has become a major tourist centre for day visitors, with bed and breakfast and holiday homes dominating village activity. There are about 370 households in the village: sadly, more and more are holiday homes. However, there is a thriving Village Hall, a shop and two pubs.

West Lulworth is part of the famous Jurassic Coast which includes Lulworth Cove and Durdle Door, and is visited by hundreds of thousands of visitors every year. Our farming and fishing community has become a major tourist centre for day visitors, with bed and breakfast and holiday homes dominating village activity. There are about 370 households in the village: sadly, more and more are holiday

Holy Trinity Church was built in 1870 to replace a Norman building and stands in a commanding position near the centre of the village. It is a fine building which has been well maintained, and in 2019 a reordering project included the provision of WC and servery facilities. The Church attracts many visitors to see unusual wood carvings, beautiful stained-glass windows and a local history exhibition as well as enjoy the peace of the well-maintained graveyard.

Lulworth Camp, next to the village, is home to the Armoured Fighting Vehicle Gunnery School where there are quarters for the families. It is linked to the Armour Centre at Bovington and an Army Chaplain is responsible for both camps.



We have a small and rather ageing Church community using Common Worship, with recorded music for hymns when we are unable to find someone to play our well-maintained organ. Numbers attending worship are rather small but nevertheless there is much support for the church within our community. Numbers are boosted a little by visits from summer holidaymakers. We are determined to involve Lulworth & Winfrith VC First School more in the life of our Church. Once a week a team of parishioners leads 'Open the Book' for the older children at the West Lulworth school. This team is always involved in end of term services.



Our most populous service is the Easter Day service on Lulworth Cove beach. This is a great opportunity for mission with locals, holiday home owners and tourists.



## St Nicholas, Chaldon Herring

The village of Chaldon Herring lies at the western end of the Parish and includes the settlements of East and West Chaldon, Tadnoll to the north and Nothe Cottages on the coast. The population is approximately 170, about 20 of whom are school-age children. There is a village hall and a popular pub, The Sailor's Return. There are some holiday lets and a number of second homes, whose owners are generally engaged in village activities.



There are records of a church here in the Domesday survey but the present Grade II listed building dates from early 15th century with extensive but sensitive additions in the 19th century. It sits on high ground and is reached by many visitors who are not deterred by the steep path. The church fabric is sound but there are some maintenance tasks outstanding from the recent Quinquennial; generous grants will allow us to tackle these over the next year.

The congregation averages about 10 and is not getting any younger. One or two come from outside the village for the monthly service. We sing hymns to recorded music or on occasions accompanied by an organist. Winfrith Pre-School have staged special services for Nativity and Harvest in our church and taken part in DHCT Ride + Stride for several years. A high-speed broadband connection has just been installed which will enable live streaming and routine internet access. Despite low attendances at Sunday services, there is ongoing support for the church in the village and engagement in fund raising events. Our main event is Trailer Rides along the Jurassic coast and Cream Teas in a village garden. This very much depends on fine weather and on the goodwill of one of the Lulworth Estate tenant farmers, who provides the tractors, trailers and drivers at minimal cost.

An annual outdoor service for the whole Lulworths Parish attracts up to 100 people and is held in a small field in the centre of the village (called 'God's Pocket').





## St Christopher, Winfrith Newburgh



St Christopher's serves the two villages of Winfrith Newburgh and East Knighton, with a population of around 750. There has been a church on the site since the 12<sup>th</sup> century. A lavatory and customised servery have been installed and space created for tables and chairs, making it a versatile area for events.

Winfrith has a shop and post office open all year round and a well-supported village hall which, through its 'Community Foods' volunteers, hosts a fortnightly 'Soup and Pud' and a monthly 'Lunch for All' for local senior citizens. The committees of the village hall and church work in close partnership to provide regular community events.

St Christopher's hosts a service each Sunday with an average congregation of 20, including a lay-led Songs of Praise featuring a talk on an inspirational Christian. Café Church is held in the well-equipped village hall attracting about 40 worshippers. There is a hardworking church committee who fill the roles of treasurer and secretary, but currently not Churchwarden.

We have a good relationship with the Church of England school in Winfrith for children ages 4-7. The school nativity is held in St Christopher's Church. One of the Lay Worship Leaders takes a monthly collective worship session, Godly Play, in Winfrith school.



We have up to now been able to afford our Share, but as the congregation becomes older, we are concerned about the future and hope that the new Benefice Missioner will help to attract a wider age range to our services.

Our aim is to be a 'warm, welcoming and well used church', thriving in a beautiful rural setting.





## Our Schools...



## Welcome to Wool CE Primary School

Rooted in the Community to Grow and Flourish

Wool CE Primary School is a mixed age primary school of four classes working closely with other schools in the Coastal Learning Partnership family. Mrs Ellie Griffiths is Headteacher.

Our school vision encompasses a vision of the Kingdom of God where God's love reflects that everyone is welcome, is valued and truly matters. Each of us is a unique individual and, like the mustard seed (Matthew 13:31 - 32), we all have the potential to grow and to flourish. Like the tree that the seed in the parable becomes, we strive to make our school a place where everyone feels valued and for us all to become the people that God calls us to be.

Relationships and positive partnerships are really important to us at Wool CE Primary and we do all we can to encourage and nurture close home and school collaboration. We love working with the team at West Purbeck Benefice and we enjoy walking to Holy Rood church regularly to share in collective worship. Local clergy come to lead some sessions and we especially enjoy being visited by Open the Book to hear Bible stories.



From our recent SIAMS inspection in May 2024:

- The Christian vision at Wool Primary, deeply rooted in biblical teaching, is a living reality. It underpins all that the school does to meet the needs of its community. This enables adults and pupils to flourish.
- Religious education (RE) is valued and prioritised. As a result, pupils demonstrate an impressive depth of subject knowledge and understanding.
- Inspirational collective worship is exceptionally well-planned, monitored and evaluated. Consequently, individuals flourish spiritually.
- A shared understanding of spirituality is embedded through identified and spontaneous opportunities in the curriculum. This enriches individual spiritual development.
- The vision inspires respectful and caring relationships. Both pupils and adults are valued, supported and nurtured. It especially embraces the inclusivity of those with special educational needs and/or disabilities (SEND).

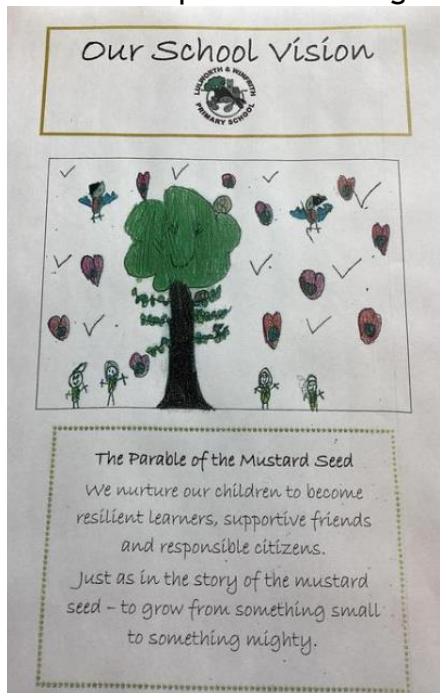




## Lulworth & Winfrith CE Primary School

Lulworth & Winfrith CE Primary School is a mixed age primary school working closely with other schools in the Coastal Learning Partnership family. In January 2025 we welcomed Mrs Ellie Griffiths as our new Headteacher. We are a small school in a rural setting along the Jurassic coast. Our school spans two sites with Reception, Years 1 and 2 being based at Winfrith and Years 3 to 6 learning at Lulworth.

We aim to provide the highest standards of teaching and learning for all of our



children to enable each individual to excel in their education, within a caring and positive environment driven by a strong Christian ethos. We strive to live out our school Christian values each day and our broad, balanced and ambitious curriculum engages and enthuses our pupils in an inclusive setting.

As part of our distinctive Christian character the school has developed the core values of belief, fellowship and harmony and these underpin all the work we do. Through these values we believe that your child will grow as an individual morally, socially, emotionally and spiritually.

We regularly engage with volunteers from the parish and enjoy holding services at the churches in both Lulworth and Winfrith where we can gather children and parents/carers together. We also hold daily collective worship in our school hall and the children

love being visited by the Open the Book team!

From our recent SIAMS inspection in June 2024:

The Christian vision of Lulworth and Winfrith Primary School is deeply embedded and rooted in biblical teaching. This unites leaders, staff and volunteers in enabling adults and pupils to flourish.

The vision inspires a deeply nourishing culture where wellbeing is a priority. Consequently, people receive support and nurture in an inclusive environment.

Effective leadership in religious education (RE) results in an engaging enquiry approach. As a result, pupils demonstrate an impressive depth of understanding about a variety of world faiths and views.

Collective worship inspires pupils and staff to reflect and to take action. This contributes to enriching their individual spiritual development.

Leaders empower pupils to be resilient, supportive and responsible. They actively promote the needs of others as courageous advocates and agents of change.



## Bere Regis Primary and Pre-School

Bere Regis School is a happy, friendly village school with strong sense of community, where all children and adults are encouraged to achieve their potential in a creative and supportive learning environment. We believe that everyone should be celebrated for their uniqueness; our aim is to help them succeed, by fulfilling their potential in every aspect of school life: academic, social, personal, physical and spiritual.

Our dedicated staff work hard to provide stimulating, challenging learning opportunities through which children acquire essential skills and knowledge to take them forward in their next stage of learning. We aim to provide a vibrant, creative and meaningful curriculum which inspires children to learn, and allows them to make connections with their own experiences. We also help them develop a sense of enquiry and nurture the essential characteristics which will help them make a positive contribution to wider society as they grow, such as resilience and responsibility.

Our work is underpinned by building strong partnerships with parents/carers and the wider school community. We aim to work in partnership, to ensure that together we can provide the best for the children.

### **OUR VISION STATEMENT:**

We at Bere Regis Primary and Pre-School work in partnership with parents to put children at the heart of learning.

We believe that every child is entitled to enjoy their childhood in a safe, secure and stimulating environment.

Children are valued and celebrated for their uniqueness, culture and heritage and are nurtured to achieve and develop their full potential.

### **We the staff, parents and governors aim to encourage each and every child in all aspects of learning by:**

Working together as a team

Providing a rich and exciting curriculum

Ensuring smooth progression throughout the school

Meeting needs and catering for all abilities

Promoting curiosity and enthusiasm, independence and confidence

Encouraging awareness of rights and responsibilities, respect for others and self-esteem

Giving children opportunities to say what they think should happen when adults are making decisions that affect them

Promoting a healthy lifestyle where children's spiritual and moral development is nurtured.



## Bovington Academy: a place to belong, a place to believe, a place to achieve.

Bovington Academy is a unique place to learn. Nestled in between the Purbeck Hills, Hardy Country, the Jurassic Coast and the home of the Royal Armoured Corps, we offer our children an education which has no limits.



Bovington Academy is part of the Aspirations Academy Trust whose core values are self-worth, belonging and engagement. At Bovington we strive to ensure our children feel they belong so that they have a feeling of self-worth so that they become engaged and focused in their learning. We run a curriculum that is driven by broadening pupil's horizons, introducing them to experience that they would not normally have and removing all barriers.

As I write, 64% of our children are from military families. I say as I write, as this changes daily... in January 2025 we will be welcoming 8 new children. Our mobility is higher than national average and we need to ensure that every person- parent, child, older sibling or grandparents are quickly assimilated into our community. We get to know our children exceptionally quickly to ensure we are meeting their needs in order for them to strive both socially and academically. We have an outstanding pastoral team who works tirelessly to support our pupils and their families.



Over time we have developed links with the Garrison Church: taking the whole school to celebrate the major Christian celebrations. This is something that the children thoroughly enjoy and we believe is part of their maturity into inclusive members of our community.

But don't take our word for it. Our recent OFSTED inspection (Oct 2023) rated us good with 3 areas graded outstanding, these included Personal Development, Behaviour & Attitudes and Leadership & Management: "Pupils thrive at Bovington Academy. They are happy and curious. Pupils also care for and respect one another. They welcome everyone into their community. Many pupils join the school at different times of the year. They quickly settle into this inclusive school. The values of self-worth, engagement and purpose are understood by all. This is reflected in pupils' exemplary behaviour. Learning is enriched by trips and visits. Pupils talk enthusiastically about these experiences. Pastoral care is exceptional. Pupils here feel part of the 'Bovvy family'."





## Service pattern for February 2025 (an example of current provision)

### February 2025 Services

	<b>Sunday 2<sup>nd</sup> February Candlemas</b>	<b>Sunday 9<sup>th</sup> February 4 before Lent</b>	<b>Sunday 16<sup>th</sup> February 3 before Lent</b>	<b>Sunday 23<sup>rd</sup> February 2 before Lent</b>
	<i>Gold or White</i>	<i>Green</i>	<i>Green</i>	<i>Green</i>
<b>St Laurence Affpuddle</b>	11am Holy Communion	10am Morning Praise	11am Holy Communion	9am BCP Holy Communion
<b>St John the Baptist Bere Regis</b>	4pm Evensong	10am Junior Church 11am Family Service	9am Holy Communion	11am Holy Communion
<b>Holy Rood Wool</b>	9am Holy Communion by Extension	10.30am Holy Communion	9am Holy Communion by Extension	10.30am Holy Communion
<b>St Nicholas Chaldon Herring</b>		9am Holy Communion		
<b>St Andrew East Lulworth</b>	9am BCP Holy Communion			
<b>Holy Trinity West Lulworth</b>			No service	
<b>St Christopher Winfrith Newburgh Streamed</b>	10:30 for 10.45am Café Church <b>Village Hall</b>		11am Songs of Praise	11am Holy Communion
<b>Readings</b>	Mal. 3.1-5 Heb. 2.14-end Luke 2.22-40	Isa. 6.1-end 1 Cor. 15.1-11 Luke 5.1-11	Jer. 17.5-10 1 Cor. 15.12-20 Luke 6.17-26	Gen. 2.4b-9, 15-end Rev. 4 Luke 8.22-25

### Midweek services

	<b>Wednesday 5<sup>th</sup> February</b>	<b>Wednesday 12<sup>th</sup> February</b>	<b>Wednesday 19<sup>th</sup> February</b>
<b>St John the Baptist Bere Regis</b>		10:30am Holy Communion	
<b>D'Urberville Centre Wool</b>	10.30am Holy Communion & Community lunch		10:30am Holy Communion



## The West Purbeck Benefice Prayer

**Holy God**

**we thank you that you have called us to be your people  
across the West Purbeck Benefice.**

**We praise you for the beauty that surrounds us,  
the people who make up our communities,  
the visitors whom we welcome  
and above all for the gift of faith you have given to us.  
Help us through prayer and worship to grow closer to you,  
through service and care to reflect your love,  
and through mission to share your Good News  
with all around us.**

**Through Jesus Christ our Lord.**

**Amen.**

[www.westpurbeck.org.uk](http://www.westpurbeck.org.uk)

