

# WELCOME TO UPPER NADDER





## **Welcome!**

Thank you for your interest in the post of rector of the recently created benefice of the Upper Nadder. This is a super opportunity to serve and shape our future ministry in one of the most beautiful parts of Wiltshire.

Based in Tisbury, an appealing large village, connected by rail to London, this group of small communities has been formed out of the former Nadder Valley Benefice, and retains close working relationships with its neighbouring churches along the valley, home to one of the five rivers flowing into or out of Salisbury.

I am looking for devoted and visionary clergy, who can inspire and lead our churches in Making Jesus known - our new diocesan vision. While this can appear a timeless landscape, our parishes are constantly changing and face all the challenges and opportunities of life in the 2020s. Because of this, the church must renew its mission and traditions for the contemporary situation.

In the Diocese of Salisbury, we place a high value on the encouragement and pastoral support of our parish clergy and, should God guide you to serve here, you will become part of a committed and collaborative team.

Please contact the Ramsbury Office if you need any assistance with your enquiry and be assured of my prayers as you seek the Lord's will for your future.

Sincerely in Christ,

Andrew Rumsey, Bishop of Ramsbury.



## Welcome to the Upper Nadder Benefice.

We are seven rural parishes in Wiltshire located in the Northern part of the beautiful Cranborne Chase National Landscape midway between Shaftesbury and Salisbury, effectively between the major roads running west from Salisbury: the A30 on the southern edge and A36/A303 to the north.

Our villages vary in size, but each has a strong, rich, and caring community spirit. The Benefice is served by an Associate Priest, who currently has parish priest responsibility for one parish, two Licensed Lay Ministers, and two Lay Pastoral Assistants; a retired Priest with Permission to Officiate lives within the Benefice. There is considerable interest in Lay Worship Leader training for lay-led services. Tisbury, the largest parish, has a volunteer administrator.

The congregations value the variety of services offered, Common Worship and Book of Common Prayer, Eucharistic and non-Eucharistic, and less formal All-Age services. They are particularly supportive of the services which mark the Agricultural year. There are two choirs which support worship within the Benefice.



Individual church buildings range in date from 12/13th century to 19th century, an architectural heritage of which the parishes are justly proud. We actively support the annual Ride and Stride, raising funds for Wiltshire Historic Churches Trust.

As our newly appointed Rector you will benefit from a substantial Rectory with an ample garden in the largest village, Tisbury, the geographical centre of the Benefice with good rail links to the West Country and, through Salisbury, to London.

Sarum College, Salisbury, offers plenty of further learning opportunities

All the individual village churches receive significant support from their wider communities, demonstrating their strong sense of ownership of their buildings.

The parishes are willing to work together, sharing expertise on building matters for example

All are looking to encourage more, younger people into our congregations, to continue to promote the sense that each church is the centre of village life. We look forward to working with a new incumbent to promote locally the diocesan vision 'Making Jesus known.'

Information about Salisbury diocese can be found at [www.salisbury.anglican.org/whos-who/diocese](http://www.salisbury.anglican.org/whos-who/diocese)

**The new Priest will find:**

- Churches who value good balanced teaching, and residents, whether obvious believers or not, who are supportive of their Church
- A warm environment and supportive colleagues who desire to move forward in growing this new Benefice
- Three C of E Primary and a range of nearby Secondary schools, where you would find opportunity for school governance and/or chaplaincy. Open the Book teams visit all three primaries, who all have excellent relationships with their respective churches; the Associate Priest and one of the LLMs regularly lead Collective Worship in the schools.
- An understanding that some changes may be needed, particularly in our service patterns, as we discern how we can have the most impact moving forward, recognising the need to do some things differently in order to be more relevant in our communities

**Our people seek a Priest who is:**

- strategic in outlook, approachable, to help us develop a clear vision of what we, as church, are called to be
- eager to develop further outreach opportunities and encourage people to try different worship experiences
- rooted in Jesus, prayerful and eager to work in partnership with our communities
- a good listener who will encourage the current congregations whilst simultaneously reaching out more widely and in new ways
- resourceful in handling the challenges that a Multi-Parish Benefice can present
- Who can promote discipleship, including through financial giving

**Will you**

- Show us how to deepen our faith and become a more Christ-like Church
- Support us as we work with our existing congregations, schools and communities
- Lead us in mission and ministry
- Recognise, encourage and support gifts of ministry and vocation in others
- Build ecological aims, sharing enthusiasm for the life of our countryside, which will be seen through a passion for leading worship, preaching and spirituality
- Participate in all aspects of parish life







## Where you will live

Tisbury Rectory is an attractive four-bedroom home with central heating throughout and working fireplaces in the three reception rooms. There is a good-sized garage and plenty of parking space. The generous gardens in front and behind were well maintained by the previous occupant.

The Rectory is situated a few minutes' walk from the High Street and not far from the church and the railway station.



Snug or Dining Room



Sitting Room



Bedrooms 1&2



Kitchen/Diner

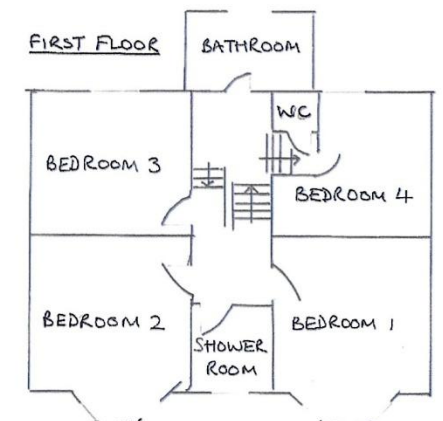
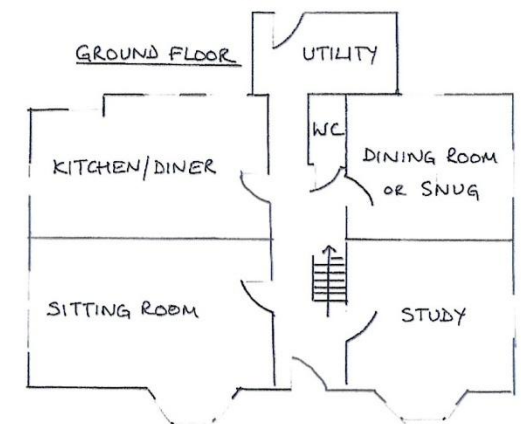


Study



View from Bedroom 2

## Sketch plan of Tisbury Rectory (not to scale)





## Tisbury

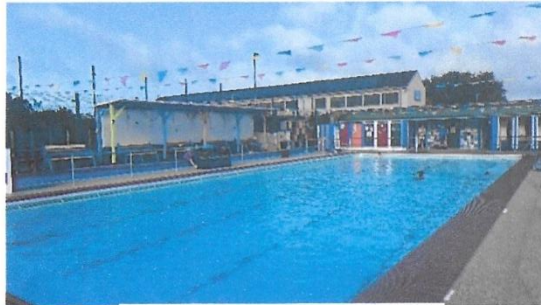
With its population of around 3,000, Tisbury is the largest village in the benefice, and is also the largest settlement within the Cranborne Chase and West Wiltshire Downs Area of Outstanding Natural Beauty. It has a thriving retail High Street, with a variety of independent retailers and a small Co-op supermarket; there are several places to eat, including two coffee shops and a choice of pubs.



The Boot Inn

Amenities include a GP surgery, conveniently situated just along the road from the Rectory, a dental surgery and an osteopath.

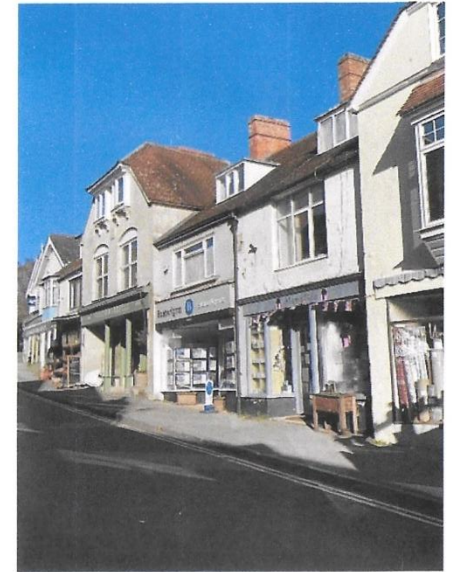
In August 2016, Wiltshire Council opened the Nadder Centre, which provides a community hub and leisure activities, and is home to the local library. Next to the Nadder Centre is an open-air heated swimming pool, the only one of its type in Wiltshire



Tisbury Swimming Pool



The Nadder Centre



Tisbury High Street

There is a wide range of activities on offer in Tisbury, from Pilates and Chair Yoga to the Arts Society and the Gardening Club. Messums West is home to a range of first-rate exhibitions both inside and outside Tisbury's historic 13<sup>th</sup>-century Tithe Barn.


Tisbury railway station has hourly direct trains to London (via Salisbury) and to Exeter St David's. We are not far from the A303, the trunk road which runs between London and the West Country. In 2024, Tisbury was listed in the *Sunday Times* among the best places to live in the South West. Each of our villages has its own individual features and character. In the Upper Nadder, we have all the benefits of village life set within beautiful countryside, together with easy access to the capital and many other destinations.



Messums West



# What we enjoy about being part of our church communities




The strong sense of fellowship among the various congregations



Opportunity to grow




I enjoy the beautiful music and songs of worship



A BIG welcome from priest and congregations alike in church



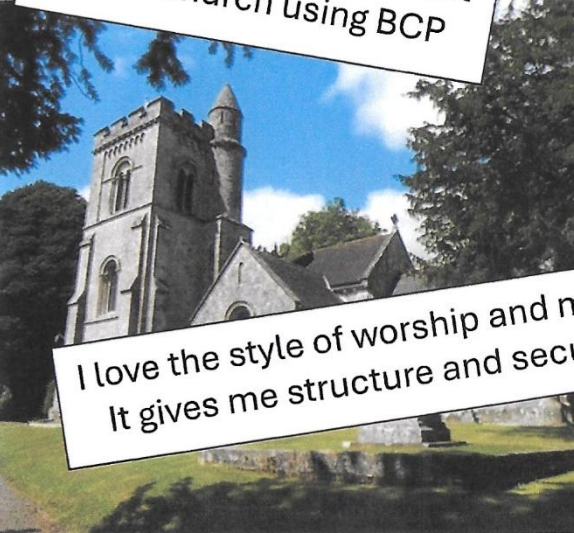
The intimacy of an ancient small church using BCP




The clergy, PCC and volunteers all get on well together to make the job in hand a pleasure



I enjoy the music and being encouraged to do my best to contribute



I love the style of worship and music. It gives me structure and security.



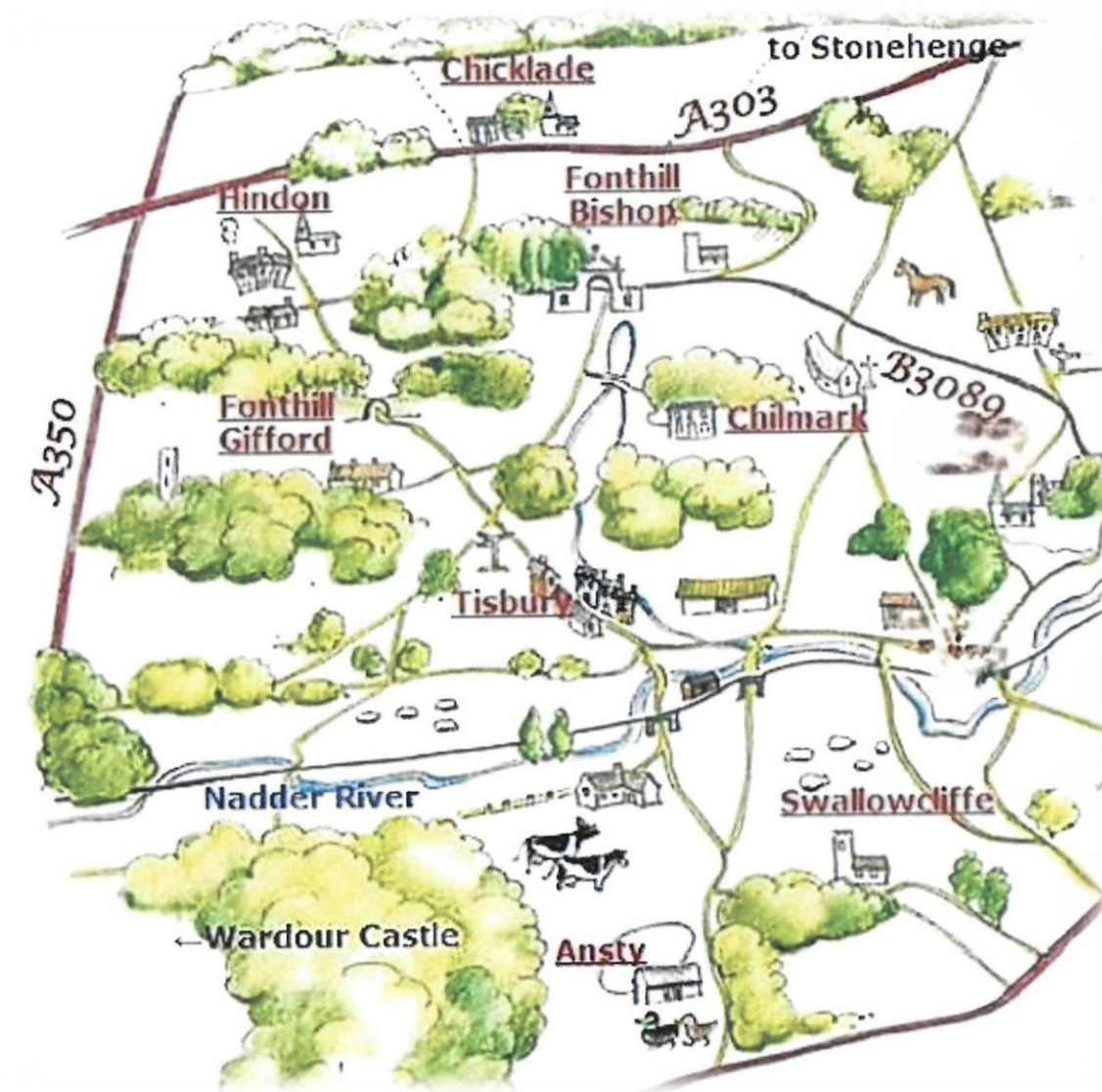
Having my faith affirmed and challenged



I enjoy bell ringing in the church



## A walk around the Benefice



*We did walk round the benefice in September for Ride and Stride ...*



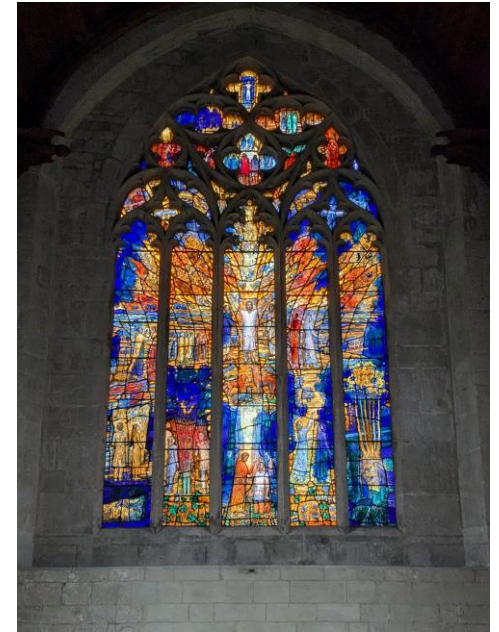
## TISBURY

Tisbury is the largest village in the benefice (c 3,000). The residents are widely varied in age, social background and employment status.

The community is very active, with considerable goodwill and involvement, support and help given by local residents to the church and its mission.

Our Grade 1 listed historic church is kept open during the day, providing a welcoming space for people to sit quietly and pray, as well as attracting visitors drawn particularly to the new memorial East Window by Thomas Denny. Next door, the church hall, housing the parish office, is a well-used space for both church and secular functions; concerts and other events take place in the church from time to time.

We enjoy a range of Sunday services, Common Worship, BCP and a more informal All-Age service, and services during the week are attended by small but faithful congregations. There is a well-established robed choir, with a professional Director of Music; the church Band leads the music at the monthly All-Age service. There are 125 on the electoral roll, the members providing a backbone of support to the village community, filling a range of voluntary positions.



Tisbury Christian Council (C of E, RC and Methodist) arranges ecumenical worship and social events during the year, e.g. Palm Sunday, Remembrance, Village Carol service, Lent lunches.

Tisbury provides a wealth of challenges and opportunities for spiritual growth. The congregation has shown itself ready to take on change and is looking to the future, reaching out joyfully to newcomers and to the young.

For more information see [www.tisburyparishchurch.org](http://www.tisburyparishchurch.org)



## FONTHILL GIFFORD

This is a very small parish, with a population of 80 adults and 8 children, adjacent to Tisbury and on the road to Hindon. The public house, in the style of a gastropub, lies next to the church. Both are on the edge of the parish. Many residents are retired professionals and weekenders largely concentrated in Stop Street, about a mile from the church.



Holy Trinity Church is a mid-Victorian building in good condition. The pattern of Sunday services is an early Holy Communion with 2 Morning Prayers (Mattins) monthly; all are Book of Common Prayer. The average attendance is 12 while major festivals are very well attended. The congregation is mostly middle-aged or elderly. The Church Electoral Roll stands at 25, many worshippers come from outside the parish, drawn by the use of the traditional liturgy.

The PCC has 5 elected members. Finances remain sound for the foreseeable future

We seek to ensure that the Word of God continues to be preached in the parish; the elderly, the sick, the infirm and those in need are befriended and cherished: the parish church is kept in good repair and continues to be the centre of our worship and the resting-place of our parishioners is well maintained.

The beauty and grace of the Book of Common Prayer and the Authorised Version of the Holy Bible continue to illuminate the worship of the parish.

For other information: [fonthillgifford.org.uk](http://fonthillgifford.org.uk)



**HINDON WITH CHICKLADE AND PERTWOOD** has since 2016 been the pastoral responsibility of an Associate Priest.

Hindon is the major part of the ecclesiastical parish of Hindon with Chicklade and Pertwood. It was 'planted' as a new borough in 1220 by the Bishop of Winchester and the original street plan remains substantially unchanged, with about 500 residents, including children. The population includes retirees and a number of younger families. Hindon C of E VA Primary School has over fifty pupils.

St John the Baptist's church was rebuilt in 1870 and dominates the village. There are 45 on the Electoral Roll and 15 – 25 regularly attend services. At Festivals e.g. Remembrance and Carol Service, as many as 100 attend. The monthly pattern of services is Parish or All Age Communion on three Sundays, Evensong on one.

The ecclesiastical parish of Chicklade and Pertwood was joined to Hindon in the 1970s.

Chicklade is a hamlet to the north of Hindon, paired with the estate village of Pertwood.

Chicklade and Pertwood's population is 80. The ancient church of All Saints Chicklade was rebuilt in 1832, refurbished 1893. It is now a Festival Church, having a minimum of six services a year. The Book of Common Prayer (BCP) and the Authorised Version are used. The church is a very important focal point for the whole community.



An outdoor service is held on Rogation Sunday for all the parish.

Occasional services are held at St Peter's Church in Pertwood by invitation of the owners.

Both Chicklade and Hindon have an active 'Friends' group whose fundraising supports the maintenance of the church buildings.

### **Hopes for the future:**

- To grow the congregation for both churches so we can be a strong witness and continue to contribute to the worship of God and the work of the church in this parish and the wider Benefice
- To make greater use of St John the Baptist, Hindon for village events as well as for worship.

Website <http://hindonvillage.org>



## FONTHILL BISHOP with BERWICK ST LEONARD

Fonthill Bishop lies one mile off the A303 within the Fonthill Estate. Berwick St. Leonard, which forms part of the parish, total population 115, lies nearby with a small Church cared for by the Churches Conservation Trust.



The 12th Century Church of All Saints was restored by Thomas Wyatt in 1879. There are 20 on the electoral roll. The PCC has six members and meets regularly. We use the King James Bible and Prayer Book, which attract churchgoers from other parishes. There are three services a month, Evensong, Holy Communion and Mattins, attended by a small regular congregation who enjoy the benefit of an efficient heating system. Special services take place for Festivals and the Christmas Carol Service is supported by a local community choir.

The village holds a mixture of events over the year, some supporting the Church, including the Village Fete. The former post office, the River Barn, is now a delightful, licensed bistro and B&B. The Estate-owned Reading Room/Village Hall is in regular use and boasts a distillery next door.

Our Vision is to continue to support the local community with the use and celebration of the Book of Common Prayer.

The Fonthill Estate continue to support the Church generously as well as mowing the churchyard and providing heat from their woodchip boiler .

See also <https://fonthill.co.uk>



## CHILMARK

The parish of Chilmark, with the hamlet of Ridge, has a population of 500, lying astride the B3089, 3 miles from Tisbury with its shops. Formerly, Chilmark quarry provided stone for Salisbury and Chichester cathedrals.

The beautiful church of St Margaret of Antioch, originating from the twelfth century has an 8-strong PCC, and 10 Sacristans. Once a month there is a regular lay-led service which is either BCP Mattins or Morning Praise while All Age Communion or All Age Services are held on every other Sunday. The congregation averages twelve, but for Christmas and Remembrance Sunday it is not unusual to have up to 70 or 80. A recent lay-led Breakfast Church Service attracted a congregation of 30. We are actively working to focus on attracting new, younger members into the congregation, and on improving communication

The Hindon and Chilmark choir supports major services.



The church and churchyards are in fair condition and maintenance is overseen by a 5-strong Fabric Group. Over 50 village residents, not just churchgoers, actively support the church, including maintaining the churchyard, flower arranging and cleaning.

Chilmark has an active C of E Aided primary school (Ofsted “Good”), a village-owned orchard and community space, and a pub, The Black Dog. A weekly email keeps the village updated about events. Most village residents work away from home or in London.

The village and its population actively support the many activities which go on each year, and which are typical of Wiltshire village life. -The church and the school hold an annual fête. There is a thriving cricket club with its own ground and clubhouse, and the Reading Room holds regular events such as exercise, art classes and coffee mornings, quizzes and other entertainment evenings.



## SWALLOWCLIFFE

Swallowcliffe (pop. 180) is a small, picturesque village with a thriving village hall, the Royal Oak pub and two alms houses. A bus service from Salisbury runs through the village

The population is diverse, active, friendly and supportive, a mix of retired people and young families. Most work away from home.

The church (built 1843), designed by Gilbert Scott, is in good order structurally. Services are held on all four Sundays of the month: Parish Communion (CW). Evensong, 8 am Holy Communion both BCP, Lay Led Mattins. Although we enjoy the more traditional form of worship, we also enjoy a range of special services eg Plough Sunday, Hymns and Pimms, Harvest Festival, Christmas carols. The Remembrance service is held jointly with Ansty. The church is open every day and has a well-supported PCC. The average Sunday congregation is 13 with >60 at special services with 22 on the Electoral Roll.

Annual fundraising initiatives include the village fete, open gardens, quiz and curry nights. We support the Parish Giving Scheme. The fabric of the church benefits from the donations from the independent, well supported, Friends of Swallowcliffe Parish Church. Our vision is to maintain St Peter's Church as the heart of our Village community, maintaining the style of services, developing our congregation, especially amongst the young, and maintaining our lovely church as a peaceful and prayerful setting open to all.

Village Link. <https://www.swallowcliffevillage.uk>



## ANSTY

St James, Ansty, is the small, historic 13th century church built by the Knights Hospitaller beside their Commandery, a hospice tending pilgrims visiting Shaftesbury Abbey and travelling from the coast to Santiago de Compostela. It has been maintained with much personal care, & has just undergone a major internal restoration.



There are two regular services each month: it is a central village asset as we have no communal hall.

The community is made of a number of older, local residents, yet there are an increasing number of new, young families – two of whose babies were baptised last year – to whom we need to reach out with different services. These, such as a Remembrance service in the churchyard and last December's Carol Service in the Commandery have been well attended, We



have a friendly collaborative relationship with neighbouring Swallowcliffe, sharing Remembrance services amongst others

St James, Ansty: a welcoming presence for young and old today as it has been for the past 800 years.

[www.anstywiltspc.org.uk](http://www.anstywiltspc.org.uk) provides more history and detail



## Some of our favourite things about living in this area

The friendliness – nearly everyone I meet as I walk around the village SMILES

Enjoying the beautiful countryside and being able to care for it and share it with others

A lovely balance of community in a rural place. Walk down the High Street and you always see someone you know.

Swallowcliffe is an archetypal Wiltshire village with two things that give me most pleasure: a pub and a church. Both are hubs of the community.

Everyone is connected whether or not they go to church. Everyone truly cares about each other and their community.

I love Tisbury for its diversity and sense of community

We are so lucky to live in such a beautiful area with excellent communications by rail and road.

Friendly people always ready to talk and a good cup of tea and coffee at Riverbarn