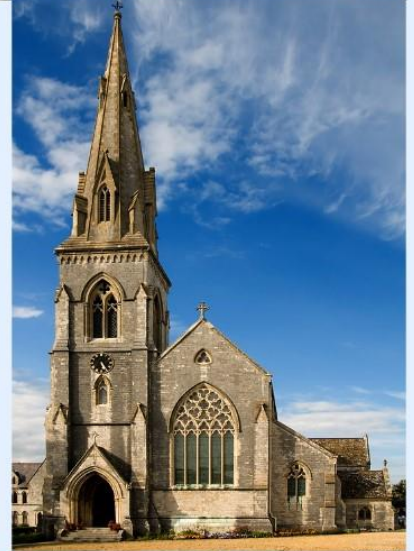


Team Rector

Parish of Radipole & Melcombe Regis with Chickerell Weymouth, Dorset



Contents

Introduction by the Bishop of Sherborne	3
Welcome	5
Who are we praying for?	6
Welcome to Weymouth	7
Meet the Team	8
Radipole District	9
St Mary's District	14
St John's District	16
Emmanuel District	19
St Mary's Chickerell District	22
The Team Ministry	24
Deanery	26
Working in the Town	27
Living in Love & Faith	28
Hope House	29
Appendix:	
A - The Rector's House	32
B - The Parish & how to get there!	33
C - Statistics & Accounts	34
D - Parish Service Matrix	35

Introduction to the Vacancy by the Bishop of Sherborne



This post offers an excellent opportunity for the right candidate to bring their own skills and leadership gifts to a varied, developing and welcoming team and deanery, where collaborative ministry between parishes and within the town is essential to build on a huge number of opportunities. We are seeking a priest in the evangelical tradition to lead a dynamic and experienced team of lay and ordained across a large part of Weymouth.

The Team Ministry is organised so that each Team Vicar has care of specific churches, with the Team Rector having care of St Ann's and St Aldhelm. Each church cares for its specific parishioners, however in recent years particular churches have offered something to the whole team, be it town centre ministry, facilities for children and young people, with St Aldhelm acting as a hub and meeting place for the whole benefice.

The Team Rector will come in at an exciting time, with the chance to shape resourcing across the team to grow it in new directions, helped by the diocesan strategy of 'Making Jesus Known' with its emphasis on outreach to missing generations, areas of social need and children and young people, through schools and youth work.

Weymouth itself is a very mixed community, there have always been good ecumenical relationships across the town, meeting specific needs including debt counselling, street pastors and food banks, all backed up with prayer and fellowship. More recently the local clergy have supported and befriended the refugees aboard the Bibby Stockholm, Afghan families making their home in the UK as well as acting as chaplains to local schools.

The deanery is a varied one. The distinctively evangelical roots of the Radipole Team has a significant place alongside the more liberal catholic, and anglo-catholic parishes. The new Team Rector will need to be an important colleague to others and an enabler of mission in all its joyful diversity.

The Team enjoys both a seaside and a town outlook, which gives considerable opportunities for new initiatives, as well as growing existing congregations. The Team Rector needs to be a leader of mission, as well as a discipler and enabler of others. Energy is needed to maximise the gifts of all those around and to support others in their own leadership. The joy of any team is its unity and diversity and someone who appreciates both will feel at home here.

The team offers much for those who enjoy being near the coast. There is plenty to do for all the family. Further afield is Dorchester, Bridport, and the Jurassic Coast and in the other direction Purbeck. Road links between Weymouth and Dorset and the West Country are relatively good (remember this is 'slow Dorset'!). Weymouth station provides regular trains to London and the south coast.

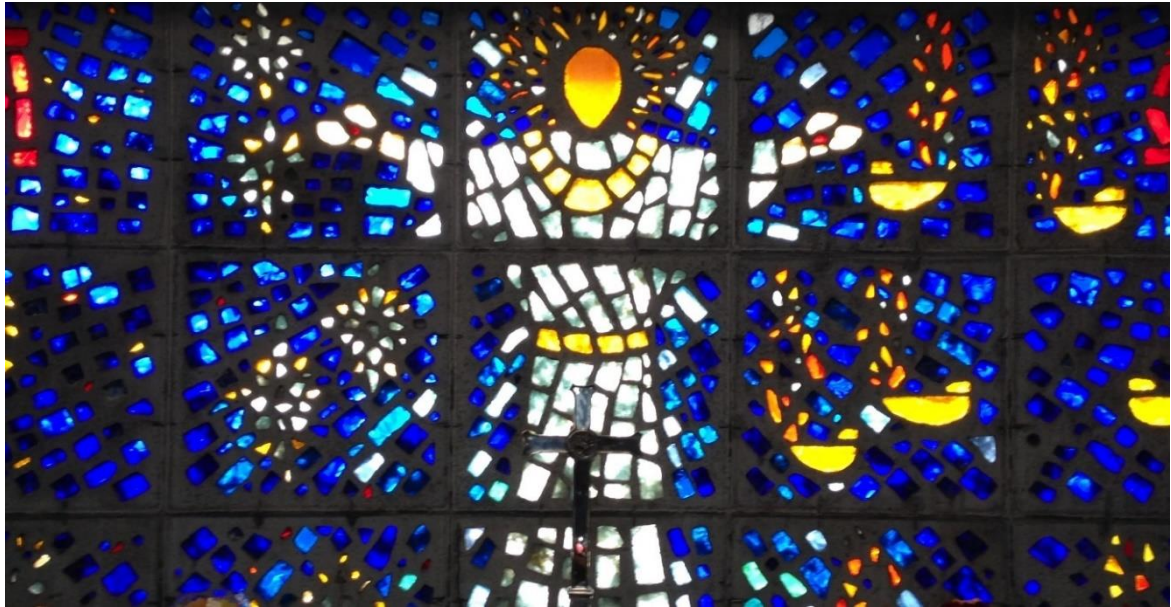
The Weymouth deanery continues to change and evolve following pastoral changes, moves and retirements. It is in good heart, with a new Rural Dean and active lay leadership. The aim

is to create a supportive environment for all clergy and lay leaders, to develop local training and to encourage benefices to work together as much as possible for the good of the wider area. There are a number of active retired priests in the deanery who get involved in the life of their local church and offer cover, and their gifts, when required.

We are looking for an experienced leader with the energy to build on all that is already happening, and who can see the huge potential to work with others to make a difference.

For further information please contact one of the Team Vicars Revd Jo Haine (07432 222645) or Revd Tom Coopey (07771 360147), the Archdeacon of Sherborne, the Ven Penny Sayer (01258 444521) or myself (01747 811960).

+Karen



Welcome!

We are an evangelical parish, open to the Holy Spirit through whose power we have seen God's kingdom growing and making a difference amongst our communities, people empowered to venture on the path God has shown them. Situated in the coastal town of Weymouth, we are organised into three districts with a clergy staff of a Team Rector (currently vacant) and two experienced Team vicars the Revd Jo Haine and the Revd Tom Coopey. The Team also currently benefits from a curate based at Emmanuel and St Mary's Chickerell with the Training Incumbent Jo. We also have a Town Centre Lay Chaplain and three employed Families & CYP workers so, together with a strong lay ministry team and several Licensed Lay Ministers (Readers), we oversee six churches serving contrasting areas of our town, unified in our passion for Christ and passion for his people.

We are excited by the opportunities offered by a new Team Rector to work with us and trust that you will be too. While a vacancy can seem rather daunting, we are confident that the Lord has a plan for us...and if you believe you might be the person God's been calling and who we've been praying for, then we'd love to hear from you. From the outset you can be confident that you don't have to do everything and nor have we done everything! Yes, we need someone who will lead us but it will be a journey together in mission and ministry with mutual love and support - underpinned by the belief that we are stronger together yet with individual character as reflected in a range of worship styles.

Our profile describes how we work and the town in which we live. We introduce Radipole District (St. Aldhelm's and St. Ann's), at the outset because the Team Rector will have direct pastoral responsibilities for these. We know the whole profile is a little long, but felt it was very important to tell you something about all of us, and we are quite a large parish.

For more information, please look at the parish website <https://ramr.church> or contact the parish office on 01305 786043.

We look forward to meeting you!

Who are we praying for?

We know God's vision for his people never changes: the salvation of the world through His Son Jesus Christ, and our call is Matthew 28:19-20 – to teach and share the love of our Saviour. We are looking for someone with the confidence and enthusiasm to lead and inspire missional imagination across the Team, enabling us to look forward, develop fresh vision and be united in working together for our town and its communities. Together we want to make the gospel relevant for today, effectively communicating this message so we can see the Church grow.

So - we are prayerfully seeking someone who:

- **believes in the authority of Scripture**, the importance of prayer, and the power of the Holy Spirit to transform lives;
- **thinks strategically** to continue to help develop mission and community outreach, especially in Radipole but also throughout the team and town, where other churches and denominations are involved together in the ecumenical Refresh initiative;
- **is willing and able to encourage others** to grow in their spiritual life, discerning people's gifting and realising opportunities to use them, furthering every member ministry; who is an **able teacher and expositor** of the Scriptures, bringing its relevance into everyday life with meaning and enthusiasm; and has **good pastoral skills**, enjoys their ministry, delights in people and has a sense of fun.
- **appreciates** the need to support Diocesan plans for a more ecologically sound ministry and Eco church status;

In return we offer you:

- **a warm welcome** and a desire to work with you;
- the **prayerful support** of the whole team, and congregations who are excited about what God is doing and is going to do amongst us;
- the assistance of an **experienced full-time parish administrator and a part-time Radipole secretary** within an office in our state-of-the-art **Church Centre** which was completed in 2012;
- the **active support** through a policy of Every Member Ministry, including a number of LLMs, retired clergy and many lay people (both male and female), in conducting services and preaching;
- **encouragement** to have at least one full day per week free of any church activity, to take all allocated holidays, and time for spiritual refreshment;
- a **modern, well-equipped, five-bedroomed Rectory** within walking distance of the two Radipole churches (see Appendix A), local schools and shops.

Before you go any further, please have a look at our regular 'What's on across the Parish' to get a flavour of what we are all about.

Go to [What-s on across the Parish... 08.05.24.pdf](#) (sample pages below)



Welcome to Weymouth!

Let's go fishing...



Weymouth in Dorset is a family seaside resort on the Jurassic Coast which hosted the 2012 sailing Olympics. The shopping centre is adequate with some empty shops but there are good local supermarkets. Local primary and secondary schools have a good reputation. In the parish there is a local community hospital and the Dorset County Hospital in Dorchester, some 6 miles away. Weymouth has some of the problems typical of seaside towns, including areas of significant social deprivation and the food banks and other charities provide support to large numbers. The Council has plans to develop the seafront and harbourside areas – see the documents at: <https://www.weymouthtowncouncil.gov.uk/wp-content/uploads/2023/10/Item-8-Appendix-A1-Weymouth-Neighbourhood-Plan-Full-Draft-Plan.pdf>

Weymouth is a brilliant place to live with a very interesting history, despite its infamy for bringing in the medieval plague! St Ann's is the oldest surviving church building in the parish, which has seen turmoil throughout history from at least the Romans to modern times. St Aldhelm's Church is possibly unique in that it was built in the darkest days of the Second World War, a sign of hope and aspirations for a better world. In Christ we still hold to those values and it is wonderful to have become the church at work as part of this parish, taking on not just local injustice of the hungry and desperate and those in a spiritual wilderness but matters of national concern such as the Bibby Stockholm Barge and the plight even more recently of Afghans desperate to escape threats of death to them and their families in their homeland. Christians from Iran, fleeing persecution have also been supported and are able to attend worship locally.

Parish History – background information

Radipole & Melcombe Regis with Chickerell is a large parish in the centre of Weymouth covering one side of the harbour and the seafront, extending inland about 2 miles. It is within the Diocese of Salisbury and the Archdeaconry of Sherborne and has six churches organised as three pairs: St Aldhelm's and St Ann's, St John's and St Mary's (town centre), and Emmanuel and St Mary's Chickerell, the latter joining the parish on 1st January 2023. Day-to-day matters, including finance, are dealt with by each church at DCC level and there is a PCC for the whole parish. *See Appendix B for map.*

In 1977 the parishes of St Mary's and Radipole were united in a new benefice of Radipole and Melcombe Regis and further extended the following year to include the parish of St John's. While the area covered by St Mary's and St John's districts include the most deprived area within Weymouth & Portland and are in the most deprived quintile in the country, the other districts, including the most recent addition of St Mary's Chickerell, are very mixed and contain some prosperous suburban housing.

Meet the Team



Revd Tom Coopey



Revd Jo Haine



Revd Dan Harland



Neil Biles



Joe Hobday



Susie Coopey



Laura Lark



Trudy Dickson

Team Rector (St Aldhelm's and St Ann's)	Position currently vacant
Team Vicar (St John's and St Mary's Town Centre)	The Revd Tom Coopey
Rural Dean and Team Vicar (Emmanuel and St Mary's Chickerell)	The Revd Jo Haine
Curate (Emmanuel and St Mary's Chickerell)	The Revd Dan Harland
Town Centre Chaplain	Neil Biles
Parish Youth Pioneer	Joe Hobday
Children's and Families Workers (St John's and Radipole)	Susie Coopey and Laura Lark
Parish Administrator	Trudy Dickson
Retired Clergy	Revds John Lewis, Anni Douglas, Malcolm Millard, Paul Selley, Richard Simmons, Geoff Hebborn, Margaret Baker, Eugenia Adoyo and Dick Luther
Licensed Lay Ministers	Donna Smith, Richard Pendrey, Shirley Evans- Jones and Carl Whitehouse.

Radipole District – Welcome to St Aldhelm’s and St Ann’s Churches



You will find a warm welcome when you come to our churches. We are committed to hospitality as people join us for worship from all sorts of church backgrounds and none. Our welcomers make it their business to get to know people and help them feel comfortable and able to worship. For the hungry there is Breakfast@9 on a Sunday and there are other opportunities throughout the week. We try to be supportive and offer opportunities for spiritual and personal growth, through building friendship, invitations to join life groups and Alpha courses and finding ways to contribute to the life of our community. We are also very determined to maintain our missional commitments with a range of mission partners and through the way we organise ourselves. We recognise that we have been so blessed by God, so loved by him that he sent Jesus to us, that we can only respond ourselves in love – to God, to one another and to our community where we try to serve him.

We would love it if you felt the same way and were prepared to join us on our journey as our Rector, our leader and pastor. If it helps your decision - one of our newest members of St Aldhelm’s, who came to us from another church, said that he has been going to church for years, but always reluctantly. Now that he has joined St Aldhelm’s he says, ‘Yes! It’s Sunday, we can go to church!’ because he felt so welcome, included and now feels a sense of purpose. And he felt comfortable enough to announce this from the front at a recent service.



Radipole District is the district for which the Team Rector has pastoral responsibility. Lying on the outskirts of Weymouth it straddles a busy main road served by buses to Dorchester. There are three congregations – one at St. Ann’s and two at St Aldhelm’s with additional monthly town-wide Encounter services at St. Aldhelm’s. During the vacancy we are very fortunate to have benefited from strong lay leadership and our faithful retired clergy but are really looking forward to our team being completed with a new Rector!

St. Aldhelm’s is in a built-up residential area with several care homes, a nursing home, three supermarkets and a trading estate. The original building was extended in 1982 with a lounge, kitchen and toilets and pews replaced with chairs to seat 300 people. It was recently awarded the A Rocha Silver Eco Award. An old church hall was replaced with the **Church Centre** in 2012, built to serve church *and* community. It is a wonderful facility, connected directly to the church with a fully equipped kitchens, toilets and parking. It is very well used, open every day and attracts social and business as well as church use.





The **Parish Office** is located in the Church Centre with an office and resource room and is where the Parish Administrator, Trudy Dickson, operates the Office for the whole Parish. The Radipole Secretary Ruth Smith, line-managed by the Rector, works here one day a week. Also sharing the Office are Centre Manager Peter Bennett, line-managed by a member of the DCC, and Centre Assistants Liz Orrell and Mike Petitdemange.

St. Ann's is a beautiful, well-maintained Grade2* small medieval building with a deep sense of prayer and commitment. Set on the edge of the district, and therefore more rural, it has a Silver Eco Award and is open daily. The extensive graveyard is now closed to burials but has a memorial garden for burial of ashes. The Old Schoolroom opposite serves as a church hall available for letting out. A village community and a more modern estate and primary school are within walking distance.



Our People

St. Aldhelm's and St Ann's are strong, traditionally evangelical and have drawn people of similar persuasion from different church traditions over many decades. This varied experience provides a deep spiritual resource which inspires what we do. Individuals choose to join groups such as Spring Harvest, New Wine and The Gathering, the Diocesan Evangelical Fellowship and other similar gatherings. Strong bible-based teaching is a feature of our worship. At St Aldhelm's there is a wide age-range of members although the 20-40 age group is less well represented. Since the inception of B@9, a fresh expressions congregation has built up, popular with younger families. St. Ann's has a strongly committed, but older congregation, nonetheless, it is a vibrant place, loving and serving its community. Guide parade services are held regularly, and the Old School Room used throughout the week. Service with a particular theme are arranged periodically, such as remembering loved ones and these attract good numbers.

During the vacancy here in Radipole steady growth has continued and our approach of 'every member ministry' proved a real strength. A group of LPAs and hospital visitors meets regularly to review and plan pastoral support, while prayer for others is coordinated and circulated online.



Prayer support is offered after services. Side-by-Side coffee mornings are



based at St Ann's to support the bereaved and lonely. Many people belong to Lifegroups which offer biblical study, prayer time and support for one another. @The Helm Café held in the lounge of St Aldhelm's and the monthly coffee mornings at St Ann's are popular, bringing in community and deepening fellowship. Blokestime, Friday Friends and other activities provide social occasions and ways to introduce non-church people to who we are

and what we do. This includes the annual Fun Day where the local community can enjoy having fun in and around the church without being asked for money. At Christmas we regularly open our doors to those who would be alone or who cannot provide a festive meal for themselves, and a wonderful meal and a variety of activities ensure they enjoy a happy Christmas Day.

Finance has become an issue as elsewhere in the nation. We are pleased we are able to pay our parish share and maintain our level of mission giving; but we have had to appeal for regular giving to increase to maintain our commitments.



We continue to stream our 10.30 Sunday service at St Aldhelm's, for which there is a good following. The AV team are an essential feature to help maintain a quality of presentation and during lockdown all combined to provide an essential way to worship together though separately - and in fact brought growth from online visitors who later came along in person. The Music Group is very talented and leads worship with contemporary as well as more traditional music and underpins so much of how we respond to God's word.

The website is under constant review and we look to develop this area further - and if visiting for the first time, it gives a very helpful over-view of our district and the parish as a whole.

We very much look forward to our next Rector bringing new insight and a fresh stimulus to our life as a worshipping community that is vibrant and outward looking, and where the Holy Spirit is our constant well-spring.

Worship

At St Aldhelm's worship on a Sunday begins at 9am with fresh expressions Breakfast@9, congregations ranging from 28-50. Breakfast is shared and moves into a version of a service of the word which is informal and engaging for everyone. Although initially set up to encourage young families and those not used to church, the congregation ranges from a few months to over eighty. Some of these have special needs of one kind or another. All are warmly welcomed and included in our informal setting. We always ensure that the service ends at 10am so that families know they can then move on to other commitments.



Next is the 10.30am with an average congregation of 85-105 adults and a few children. Services are flexible but based on Common Worship and Holy Communion takes place usually on the third Sunday of the Month. Fellowship is encouraged over coffee in the lounge after the service. Morning services are often signed and particular attention is given to those who have special needs.



A monthly Encounter Service attracts people from across the town and is an opportunity for deep, exploratory worship in the context of contemporary music and prayer.

Tuesday morning communion has a congregation of about 15 from both churches. Numbers here have

been increasing. Prayer and praise is run each Tuesday evening and there is an online prayer group.

At St. Ann's the 10.30am Sunday service is attended by 20-45 and alternates between the BCP and Common Worship with Holy Communion each second Sunday; a monthly parade service is attended by Guides who present their flags and contribute to worship.



Morning Prayer is held twice a week across both churches.

Teams from our churches also hold short services at local Residential Homes in the district on a regular basis. Our Christingle and Christmas candlelight carol services at both churches and a Midnight at St Ann's are very popular in our communities, filling our churches.

Children and Young People

B@9 is popular with families with younger children, although some teenage youngsters also attend, four of whom were recently baptised by full immersion in our baptistry. There is a **youth alpha** group led by both our Children and Families Worker and our Parish Youth Pioneer. We try to hold a **Communion service** at least three or four times a year at Breakfast @9. On the 5th Sunday of each month the 10.30am service has a **CYP group** held during the service.



Guides and Brownies are attached to both churches. Both churches are well-resourced for children. Friday Fun Club and activities such as film nights are also part of our current offering.



A recent development is the linking of this congregation with a YWAM family working in Albania and we hope to form close relationships with them and maybe even visit! Laura Lark, our Children and Families Worker regularly leads Collective Worship in the local primary school as well as going into classes to give the Christian point of view. She also comes along to Toddlers to chat to young mothers and to form bonds with them. With her input we are slowly attracting more young families and some older ones. It has been a real encouragement to see more of the adults and young people taking on roles in the running of the services. Film nights are a big attraction for families as is the Christingle service held every Christmas Eve

and we always have a packed church full of people from babies to grandparents who all hear the wonderful news of Christ's birth, (without the penguins and lobsters so often included!)

Our Mission and the Local Community

A number of groups are run in order to reach out to the local community and support our own church family. Hospitality and care for one another, reaching out with the love of Jesus is core to all these, which include:

- Toddlers
- Friday After School Club
- Holiday Clubs
- Light Parties
- @The Helm café (St Aldhelm's) and monthly café (St Ann's)
- Warm Welcome
- Blokes Time
- Ladies Nights
- Friday Friends
- Side-by-Side Café
- Community craft group
- Weymouth & Portland Foodbanks
- Family Matters

Our Commitment to Town-wide Ministries

Many members are actively involved with our town-wide ministries, detailed later in the profile.

Our Commitment to Wider Mission

A tithe of income is shared between 12 missions, currently CMS, Tearfund, Afghanistan, London City Mission, the Town Centre Chaplain, CPAS, The Lantern Project in Weymouth, the Sudan Link, CAP, Barnabas Fund and Christian Hope International. We hold a Radipole Young Persons Mission Fund also support YWAM in Albania through B@9 and The Children's Society through Christingle services. Recently attached to our church is the locally active One World Group which contributes to our mission giving.

Challenges

Radipole DCC has identified the following challenges:

1. Identifying missional opportunities and growing church community
2. Further developing links with Radipole Primary School at both churches
3. Maintaining our buildings as fit for the purpose for future generations

Church Wardens: Richard Sloan (St Aldhelm's) and Liz Bartlett (St Ann's)

So that's something about the Radipole District where our new Team Rector will be based and have particular pastoral responsibility but there are two other districts and the joint PCC for which the Rector will have oversight, though not with direct responsibility for day-to-day matters. Currently, the lay co-chair, Neil Biles, shares leadership of the PCC. And as you'll find throughout this Profile, it really is an every member ministry, and there is no expectation of the new Rector having to do everything! It will be a supported leadership model.

St Marys Town Centre and District

St. Mary's Church is in the heart of Weymouth situated very near harbour and beach covering the retail hub of the town including hotels, guest houses, shops and offices. Nearby flats and bedsits overlook the inner harbour. There is a mixture of local residents, town centre workers, seasonal employees and a large influx of holidaymakers. The ward in which it is based is one of the most deprived in the county and there are a number of homeless people and rough sleepers around the town centre. St Mary's has the opportunity and challenge of reaching out to this very mixed and variable demographic.



The present Georgian building is the third building on the site. Opened in 1817 to replace a crumbling Jacobean building, it is a Grade I listed building in reasonably good repair. In the 1970's a major refurbishment converted the aisles into side rooms and other facilities. Here the Mustard Seed Community Arts organisation is run – a popular arts and crafts community and shop. There is the Simeon Room, kitchen and toilets is used throughout the week for a range of community outreach projects led by our Town Centre Chaplain – an employee of the Parish. Fundraising and faculty applications are sought for an accessible entrance on the south side of the church and essential repair work on the clock and bell tower.

The worship area seats 100 people on the ground floor in pews, with galleries on three sides which can extend this to over 600. The church is blessed with a fine organ and modern AV facilities. Numbers are at around 30 each Sunday but the congregation is very faithful and outward-looking, committed to bringing Christ into this special area of the town.



The church is led by a strong and similarly committed lay team including Church Wardens, LLM, retired clergy and lay preachers, overseen by Revd Tom Coopey – Team Vicar for Melcombe Regis.

Worship

The 11am service is characterised by Common Worship and Bible teaching together with traditional organ and contemporary music led by a worship group. The core congregation of around 30 is supplemented by holiday makers and occasional worshippers. We have seen encouraging signs of growth including some younger people. Known for its warm welcome, pastoral and prayer support, the church clearly proclaims God's word.

The 9am Breakfast church has grown since 2021 and provides hospitality to often needy people who appreciate the informality and support.

Community Activity

Neil Biles has been Town Centre Chaplain since September 2019 with the vision is "To bring Good News to Weymouth Town Centre through St Mary's Church by serving the local community by providing opportunities for all to engage with the Good News that all are

welcome and are invited to join with God's story." Areas of focus of ministry include residents, businesses, harbour area and tourists. The Chaplain's main ministry is focused on outreach within the building.

Regular Weekly Activities

Transformed to ensure that it is welcoming for all, especially families, the Simeon Room with play equipment available, has a relaxed, welcoming atmosphere with sofas, fresh flowers, homemade cake, coffee and much more.



Practising hospitality of food and in worship, the church offers:

- MondayBrunch@StMarys,
- MondayGlobalCafe@StMarys
- TuesdayCoffee&Cake@StMarys
- TuesdayWarmWelcome@StMarys serving lunches.
- TuesdayWorship@StMarys for Big Screen Worship.
- TurnUpTuesdays@StMarys evenings courses such as Alpha and Bible study
- WednesdayCrafts@StMarys with Neil Biles and Jackie Dukes, who works for KeepInTouch under Refresh
- WednesdayWarmWelcome@StMarys.
- 12 o'clock prayer@StMarys on FaceBook and Instagram, a reminder to pause and pray.

Special Activities and Courses

- SafeSpace operates Friday and Saturday nights from 9:45pm to 3am and has become a meeting place for people. Two security guards and two medics support the work of the Street Pastors here.
- The Well is a monthly opportunity to go deeper with God. Led by Forchie and Keira Franklin, people gather in worship from a variety of churches from Dorchester to Portland.
- Life Skills courses for those going through the debt process with CAP that includes cooking, budgeting, building relationships and much more-so essential for moving forward.
- Monthly Saturday Prayers@StMarys builds on other prayer opportunities for people to come and pray once a month. Doors open 7:50am to 8:30am for breakfast followed by prayer for Weymouth and Portland.

Other activities

CAP – Ideally positioned in the town centre, together with the Manager, Claire Atkin, we work closely to promote this work, for example, Summer Cinema for families with popcorn and sweets, hot dogs and nachos, attracting new people to church! And in December – In conjunction with the Weymouth Business Improvement Development (BID) and other local churches we put on a Nativity Trail around the town. Six churches were last year involved with various activities from making stars to selfies with Mary and ending with singing carols and sharing the Christmas Story.

Church Wardens: Iona McLeod and Jean Smith

St John's Church and District

St John's has been a visible presence at the end of the Esplanade for over 160 years. The District includes part of the seafront, the Park District and then a section of housing based round the Dorchester Road and is enclosed by Radipole Lake and Lodmoor Nature Reserve. Key buildings are the Community Hospital, Weymouth College (FE), Trimar Hospice and St. John's School.

Housing is mixed. On the seafront there are many guest houses which draws visiting holidaymakers on a Sunday morning. The Park District is closely packed, with some multiple occupancy housing and it scores highly on indices of multiple deprivation. Semi-detached and detached housing can be found inland as well as an increasing number of apartment blocks and retirement flats. There are several residential care homes and sheltered accommodation for vulnerable adults. The ethnic and cultural diversity of the area is increasing significantly.



Vision and Values

Our Vision is to be a thriving, open, loving and Christ-centred family where people are welcomed, belong, encounter God, grow in faith, passionately follow Jesus and generously share God's love.

Our Mission is to demonstrate God's love generously and share the Gospel clearly in ways which transform the lives of people, families, the community and our town.

Our Core Values: we aspire to excel in being welcoming, worshipping, loving, serving and growing.

Worship

Sunday 9am service with Anglican liturgy, Bible teaching and traditional hymns and choruses. Services of Holy Communion are held on the 1st and 3rd Sundays of the month.

Sunday 10.30am is contemporary and informal with an emphasis on sung worship, Bible teaching and times of ministry. There are vibrant groups for children and young and a dedicated area in the church for babies and toddlers. The 4th Sunday of the month is a Communion service.

All Age Services occur on special occasions such as Christmas, Easter, Mother's Day and Remembrance Sunday we have vibrant and interactive services for all ages. These are usually at 10.30am.

Open Air Summer Services take place during August as we meet in the grassy church grounds for a laid back and informal worship services for all ages. These start at 10.30am.

Monthly Evening Service Praise, Prayer and Healing Service. 6pm, 2nd Sunday of the month. A gathering in which we have the freedom to spend time in Praise, Prayer and waiting upon the Holy Spirit.

Through the week

A number of **small groups** meet through the week -providing supportive environments for faith and friendships to deepen. The church is open every Wednesday with **Morning Prayer** at 9am. **Coffee** 10-12pm and then a **free community lunch** at 12pm. The church has a committed **Eco Team** and St John's has recently been awarded Silver in the A Rocha Eco Church programme. We have an **active team of LPA's** who support provide pastoral and practical support to members of the congregation and community. We also offer financial, prayerful and relational support to a number of overseas Mission Partners.

The Park District and Park Church Centre



The Park Church Centre is a Parish resource in the heart of the Park District. Previously this has housed a wide range of youth and community projects and was a Church Plant for some years too. The centre is currently leased out to a local Charity who run a range of community services in the building. The church seeks to work in a supportive partnership with the Charity and are currently exploring new community and mission initiatives that could take place at the centre.

Children's, Families and Youth work

We love to welcome children, young people and their families, aiming to be a church where everyone feels welcomed and where we offer a wide range of activities through the week.

Sundays

- SJ Kids for Primary School aged children meeting every week during our 10.30am informal service -in Hope House where we do church in a fun and lively way. Our heart is to see every child have their own personal relationship with Jesus.
There is a creche space at the back of church for those with pre-school aged children, where children can play, whilst adults still engage with the service.
Various social events throughout the year aim to encourage community and offer opportunities for SJ Kids families to socialise together and support each other.
- **IGNITE** for secondary school-aged young people, held in Hope House. It's comfortable and a space where 'we can all be exactly who we are, where everyone is valued, listened to, and can have their voices heard'. The group shares food together and discusses important issues, exploring God's message for us.

Through the week

- **Little Fishes:** Parent and Toddler Group. Mondays, 10-11.30am
- **Connect Groups:** Two exciting after school clubs that meet on a Thursday for children in years 1-4 and one for children in years 5 and 6 that meet in Hope House and enjoy all it has to offer.
- **Holiday Club:** At Easter we run our annual kids holiday club, which has been a great success over the last few years and drawn in large numbers of children from the area.



- **St John's School:** We have a long -standing and excellent relationship with St John's Primary school. Tom (Vicar of St John's) is a Governor, part of the Ethos team, regularly leads Collective Worship and contributes to RE and staff training. Susie (St John's Children's and families worker) also regularly leads Collective Worship, runs a TLG early intervention mentoring programme and runs engaging projects during the year such as the interactive Easter experience and the annual Prayer Tent. We welcome the school into church and this happens on a regular basis throughout the year for key services and celebrations.

Challenges for the future:

- Integrating new people as the church continues to grow.
- Evangelism. The church has frequent and positive contact with a wide range of people but there is a need to find the best ways of explicitly sharing the Gospel with our community.
- Funding: the on-going success of our work with Children and Young people will be dependent on our ability to continue to fund our employees and projects.
- Developing a ministry to young adults
- Developing worshipping communities for families, children and young people.
- Engaging well with the Park District

Church Wardens: Peter Evans-Jones and Mark Foxall

Emmanuel Church – Southill District

Emmanuel church right in the heart of Southill is a community of people who worship God together, led by the Holy Spirit. We seek to follow Jesus and join God in His mission in the world longing to see God's Kingdom increasingly revealed in our community and lives



transformed by Jesus. We aim to bless our community in God's love and welcome all who come. At our vision day in 2019 we felt God was calling us to be a church that is:

Growing Younger, Growing Deeper, Growing Wider

Southill still feels like a distinct community with clear boundaries. To the west runs the border with Chickerell District. Currently there are open fields here however, new housing has been proposed which will merge the boundaries.

Southill grew up in phases from the 60's to the 80's, building on what was small development. There are a few shops, a pub, a primary school, a community centre, day centre, some sheltered housing, a newly built new care home and SPARK (a charity set up to develop recreational and play facilities for children and families). There are about 1000 homes ranging from starter homes and bungalows to larger family houses, almost exclusively owner occupied although some are rented privately.

Southill has changed as many of the residents who bought houses here in the early years have died or moved into smaller accommodation. With an infrequent bus service there is a problem around access to facilities for those who are less mobile and are without a car. There is no significant employment on the estate. Southill is a popular place to live and prices reflect that.

Worship

We have an informal and friendly style of worship, recognisably Anglican with two services on a Sunday. Both serve their communities well and although each is very different with a friendly, relaxed feel to both. Each service has a separate music group which reflects the worship and the 9.30 service is often led by a one of our retired vicars or lay leaders.





The 9.30 is a liturgical service with Bible teaching, prayers and music lead by a band with mixed music. Holy Communion is on the 1st and 3rd Sunday of the month. Refreshments are served after the service and people enjoy staying for a chat. The TEN45 congregation is largely made up of those who have been part of the congregation for a long time.

The TEN45 service is intergenerational with opportunities for practical (messy!) worship. This service was started in 2022 in response to our vision to be **Growing Younger**. The congregation is still in its infancy and has grown from a handful of people who were part of the wider church congregation already. People are welcomed with a slice of toast and an opportunity to chat with those who were at the earlier service - before the service begins at 11 am.



Worship is multi-sensory. After the talk we usually have a response to God that is creative and everyone can get involved in, no matter their age or ability!

Across the two services we welcome around 50 adults and children on a Sunday morning. At both services the church is set up in a café style with people sitting around small tables.

Other Worship



Tuesday mornings we gather for Morning Prayer at 8.30am and Holy Communion at 9.30am. Our Licenced Lay Minister leads a Meditative Service 4-6 times a year on a Sunday evening. There are also two lay led Home Groups which meet weekly during term time.

Relationship between Southill District & Chickerell District

Team Vicar is responsible for both Emmanuel Church and St Mary's Chickerell. We are blessed also with four retired clergy and an LLM at Emmanuel who support ministry in both districts. Additionally, a team of lay people help to lead services and take part in other ways, such as our Lay Pastoral Assistants who help with pastoral care. Our vicar is also training a curate who is currently in his first year of training. He works across the two districts, living at the Rectory in Chickerell.

Growing Wider

Emmanuel has good links with the local community, including:

- A thriving Tuesday Morning Coffee Shop after the Communion service. Many come who have no other link with the church, including some who live alone and struggle with loneliness.
- Also thriving, Toddler Time on Thursday mornings with parents, grandparents and carers bringing preschool children for fun and activities.
- Great links exist with the wider community such as in 2023 when the whole community celebrated its 50th anniversary with numerous celebrations during the year: Church, Southill School, SPARK, the local businesses and Weymouth Manor Care Home all worked together.
- We hold regular services in Weymouth Manor Care Home and Southill School holds services in church twice a year. Our vicar and curate are also invited regularly to school assemblies and class activities.
- Other community activities include Light Parties and Family Film screenings on our Big Screen, provide a way of building relationships with those who don't otherwise come to church. Services such as Christingle and Carols by Candle-Light also provide encouraging outreach into the local community.



Challenges

Like many churches we are finding it more difficult to find volunteers to help run the mission and ministry that we feel called to. Our monthly Luncheon Club which has been providing, a hot meal and companionship for older people for over 28 years, had to stop recently because of a lack of volunteers. We would love to see a Children's and Family worker recruited to help the amazing work that our small team do to help us grow younger but, we are not in a financial situation to be able to do this. As a church we see God at work and we try to have fun and be faithful to our calling. At times however, it feels like, *'The Harvest is plentiful but the workers are few.'*

To find out more about who we are please visit: <https://emmanuelouthill.church>

Church Warden: Julia Moore

St Mary the Virgin Church – Chickerell District

St Mary's Church Chickerell is the newest church to join the current Team Ministry. Prior to 2023, Chickerell was a separate Parish, bordering the parochial boundaries with Southill. In 2022 a Parish Reorganisation took place and the Parish of Chickerell legally joined the Parish of Radipole & Melcombe Regis on 1st January 2023, making the Parish and Team Ministry what it is today. We are still adjusting to this significant change but are grateful for the welcome and generosity that we have already been shown.



The church is situated in the heart of old Chickerell and continues to have a village feel. Recently, Chickerell Parish has rapidly grown in size and is now a town on the west side of Weymouth. With further housing developments approved and more being planned, this growth will continue and will eventually lead to Southill and Chickerell merging. A wonderful opportunity for growth!

Worship

Our worship style is traditional and Eucharistic. We believe that church should be uplifting and provide a meeting place where God's presence can be encountered in the Bible, Holy Communion and through our relationships with one another. Worship is at 9.30am Holy Communion every Sunday except the first Sunday of the month when we have a lay led service of Morning Worship. Holy Communion is also held on the first Thursday of the month. We have a fantastic organ but sadly do not often have anyone to play on a Sunday, so music is provided through a speaker, operated by one of our churchwardens. Occasionally we have an organist which is even better! We have a very comprehensive weekly Pew Notes, distributed to those who are no longer able to come to church, due to mobility or health issues.



Relationship between Chickerell District & Southill District

While our Team Vicar is for both St Mary's Chickerell and Emmanuel Southill we have a Commissioned Lay Pioneer who is based at St Mary's, taking services every few months. Local retired clergy also help support ministry. Our curate, Dan, is currently in his first year of training and he works across the two districts, living at the Rectory in Chickerell.

Community

Despite the limitations and location of the church building, we have good links with the local community. We are often present at events run by Chickerell Town Council and other community events running stalls, fundraising for the church, and raising the profile of the church. With coffee mornings, quizzes, soup and roll events, a bazaar and lots of cream teas, these events are not only about raising money for the church but also they provide a fantastic link with the local community. During the pandemic St Mary's church started a Chickerell based food bank, now based within a community building but run by the church. This continues to serve the most vulnerable across the district.



Challenges

The location of the church building can be a challenge at times: Chickerell has developed further away from the church. The location of the church is poorly signposted, and hidden from the main road, so many people don't even know we are there. Access is by a rather steep path, which can be difficult for those of limited mobility. However, we do have a wheelchair which we can use for severely disabled people.



Like many churches, we have found that over the years our congregation has got older, declined in numbers and this has also put pressure on our finances. Joining with Radipole & Melcombe Regis Parish has provided us with significant support, for which we are grateful and hopeful.

Looking forward, there are many missional opportunities, especially within the ever-growing new housing development. This would be a fantastic opportunity for pioneer ministry however, our resources are limited.

Church Warden: Carole Loveridge

The Team Ministry

Having read about each of the districts you will already have a flavour of the parish and the town in which we serve.

All the districts in the Team seek to work together where we can for the sake of Christ and to promote witness in the town. The bulk of the town centre falls within the parish and in recent years we have been working ecumenically, building on the pioneer ministry which the diocese established. As a result, we are keen and active members of both the Deanery Chapter and Synod and the monthly interdenominational meetings where we consider working together more closely. We would like the Rector to be involved in this work, to have the time and energy to pastor existing staff and to encourage co-operative outreach, especially in the Town Centre.

In addition to our own Deanery Synod and Chapter we are also keen and active supporters of the inter-denominational monthly meetings which consider ways of working together ecumenically.

Working as a Team

The stipendiary clergy meet on a weekly basis Monday mornings, for a much-valued time of fellowship and support, Wider team meetings and socials also take place on a regular basis. As the size of the team has grown there is desire to continue to foster a sense unity and collaboration across the whole area.

The Team have identified some key challenges:

- To develop creative approaches to evangelism in all of our contexts
- To continue to encourage, empower and equip lay ministry across the churches.
- To build on the good foundations laid in terms of work with children and young people
- To continue to develop a strong sense of unity and celebrate our diversity across the area.

Resources

The team includes nine active retired clergy, licensed lay ministers and a number of people able to lead services and preach. All churches have a number of hard-working individuals who give their time in areas such as welcoming, catering, running coffee mornings or social groups, children's organisations, cleaning, flower-arranging, etc.

Finance

The Parish is currently able to pay its Parish Share regularly. Each district is responsible for its own finances and as with so many others, current financial circumstances pose a very real challenge. That said, significant funds have been found for necessary buildings works across the Parish: the Lord has blessed us at the point of need. For example, the tower at St Ann's has been renovated, a wonderful wall built by volunteers with materials paid for by donations and the Cox Trust, Hope House has been refurbished and work completed to upgrade St Mary's in the town centre. We are, however, needing to manage our finances with great care.

Parish Accounts for 2023 will be found at Appendix C.

In addition to congregational giving, Radipole District was the beneficiary of a large legacy, the basis of the Cox Trust. Its Statement of Purpose may be found online which govern the trustees carrying out their responsibilities. Most of its remaining assets are held in property which generates rental income. The Cox Trust owns the Team Rector's house and has been a major funder for building projects at both churches; it has also been able to support other churches in the parish. The trustees are the two Church Wardens and the Team Rector as minister of Radipole.

Worshipping Together

Whilst the majority of the worship happens within each individual District, throughout the year we gather together to worship as a Parish and pray together. This includes regular Parish Prayer and Praise services, Ash Wednesday and Maundy Thursday Services.

Deanery Introduction



The Deanery of Weymouth and Portland is one of the largest populated deaneries in what is predominantly a rural Diocese. It has a population of around 55,000 people and is continuing to grow with numerous housing developments and areas of proposed housing across the area. Weymouth and Portland is the location of many stunning beaches, a working harbour, the South West Coastal path, and beautiful nature reserves. There are also many opportunities for outdoor sports including excellent rock climbing on Portland and a variety of different water sports. During the London 2012 Olympic and Paralympic Games Weymouth and Portland hosted the Sailing events, highlighting how fantastic the opportunities are here for water sports. During the summer season tourism brings many visitors to the area and the area benefits from the economic upturn that this brings. The Deanery is also located within the beautiful Dorset coastline with areas of outstanding natural beauty surrounding it, all of which make it a wonderful place to live and minister.

Alongside the beauty and areas of affluence, the Deanery also includes areas of significant deprivation, and like many seaside areas across the country, there is real need here. According to the Church Urban Fund, the majority of Parishes in the Deanery are identified as either among the most deprived or relatively deprived in the country. The Deanery is also the location of the Bibby Stockholm Barge and a relocation site for Afghan families who are being resettled in the UK. The Churches of Weymouth and Portland have a strong history of working together through Refresh. Through Refresh, community action has been made possible and we see this in the work of Christians Against Poverty (CAP), Family Matters, Warm Spaces and the Food Bank.

The Deanery comprises of 17 churches with a broad range of church traditions and is served by 9 clergy. As Rural Dean and Team Vicar in the Radipole Team, I believe this is an exciting time for both the Team and the wider Deanery. As a Chapter, we are working together to develop a refreshed Deanery plan for the next season, and we are excited to see what God will do as we continue to Make Jesus Known in Weymouth and Portland.

Rev'd Jo Haine

Rural Dean Weymouth and Portland

07432 222645

Working in the Town

In 2008 the Diocese funded a Pioneer Ministry Post which was primarily about mission engagement with people outside of faith and the Church. It recognised the problems of working within a post-modern society where the Church can often be seen as irrelevant and with little enthusiasm for joining its structures or services. The project aimed to meet people 'where they're at', both physically and mentally, and create a positive awareness of God and the Church. In practice, this meant an incarnational and ecumenical approach which sought to serve the community.



The position of Town Centre Chaplain is currently being fulfilled by Neil Biles and as you will see from the St Mary's report and the notes below about Refresh, there is a very active ministry in the town centre which has seen Christians of all backgrounds coming together to benefit our community.

Both St. Mary's and St. John's churches have strategic positions in the town centre to potentially develop the legacy of this ministry but members from all our districts contribute to this outreach, bringing the Gospel with an active, powerful message.

Refresh

Building on the work of the pioneer minister and the legacy of the churches in Weymouth & Portland working together for the Olympics in 2012, Refresh developed as an 'umbrella' organisation for the churches in serving the community in many and varied ways. As church leaders also under the umbrella of Refresh we meet on a monthly basis to pray and support one another. Community Action Initiatives overseen by Refresh includes; Street Pastors, Healing on the Streets, Weymouth Foodbank, Christians against Poverty and Family Matters. Details are found on their website: www.refreshme.uk. Revd Anni Douglas currently acts as coordinator.



Schools Work

The Parish provides five Foundation Governors (including the chair) for St. John's CE Primary School which some of our younger children attend while some of secondary age attend our Deanery School, All Saints, in Wyke Regis (not in the Parish) where we also have the Chair of Governors and another governor at the school.



The governors at St John's are very actively involved with the school which recently was graded 'Good' with Outstanding in Early Years and have also just received an excellent SIAMS report. The Rev Tom Coopey is currently a foundation governor and there are close links between school and church.



In Radipole there have been regular links with the local primary school with links in school for RE lessons and assemblies as well as church visits. The St Aldhelm's Childrens and Families Worker, Laura Lark, goes in regularly and is supported by others from the churches.



Emmanuel also has links with its two local primary school and both Revd Jo Haine and Revd Dan Harland are invited in ministry into these schools.

Living in Love and Faith

The Church of England has been exercised by the deliberations about the recently published Prayers of Love and Faith. We engaged closely with the debates and explorations, seeking the guidance of the Holy Spirit in what our approach as a parish should be. Consequently, we have arrived at the following positional statement, which may be an influencing factor for some applying to be our Rector:

During the summer of 2023, the Parish engaged with the Living in Love and Faith (L.L.F.) course published by the Church of England. We engaged with this process of learning together, listening to one another, and listening to God as part of discerning a way forward for the Church of England in relation to matters of identity, sexuality, relationships and marriage. From our discussions we recognise that across the Parish there is a diversity of views and we are, therefore, committed to fostering an environment where all views on these matters are heard.

As a parish we have affirmed that whatever your sexual orientation, whatever your theological views on this matter, *everyone is welcome in our church congregations*. Christians who are gay, bi-sexual or transgender should feel loved, pastored, disciplined and cared for. We lament the experiences of gay people coming to church and being made to feel that they are a problem to be solved, rather than people to be loved. We believe and affirm radical Christian inclusion.

As a parish we have also affirmed, in accordance with its evangelical heritage, our belief in the authority of scripture. As such we hold to the traditional teaching of the Church of England and its doctrine concerning marriage: that marriage is between one man and one woman, and that marriage is the proper context for sexual intimacy. We believe this to be the pattern given to us in the Bible and by Jesus himself in Matthew 19. Therefore, we believe and affirm radical Christian holiness.

We acknowledge the fact that the Bishops of the Diocese of Salisbury have signalled their respect for the individual conscience of all serving clergy in this matter.

As a consequence, this parish will not be offering the recently published Prayers of Love and Faith (P.L.F.). We recognise that the decision to use 'Prayers of Love and Faith' is a matter of individual conscience for clergy, it is our firmly held belief that the approval of the PCC should be sought.

Hope House

Hope House – Parish Youth and Community Hub

In Nov 2018 the Parish purchased the former St John's Vicarage. This large Victorian house, situated next to St John's Church, had been sold by the Diocese in 1981. When the house was put back on the market in Spring 2018 the Parish prayerfully committed to raising funds in order to buy the property with a view to developing it into a youth and community centre. The purchase came shortly after the Parish had identified children's and youth work as one of its three top priorities. The former Vicarage was re-named Hope House. A three- part strap line was also introduced: Renewing Hope – Sharing Faith – Showing Love. The vision provides a range of transformative services for children, families and young people.



Hope House is...



- Our Parish base for Youth Ministry
- Open to all young people
- A support for families
- A place of collaboration and partnership
- Hope House serves the wider community

Parish Youth Work at Hope House

1. Sunday Morning Groups:

- SJ Kids: Provides a nurturing environment for children during Sunday morning services:
- Ignite: Tailored for secondary age students, offering a space for fellowship and spiritual growth during Sunday services.

2. **Alpha Bible Study:** Discipleship group for young people from across the Parish

3. **Connect 515:** Open youth club for years 5 and 6.

4. **Hope House Youth Club:** Open Youth Club for secondary school, aged young people

5. **Summer of Fun:** Annual summer events consisting of weekly Friday outings and community service activities during the summer holidays.

A range of other community groups and projects are also based at Hope House including 'Access to Wellbeing' a holistic community service run by The Lantern Trust.

Future plans for Hope House

- Develop Mental Health Support for young people
- Start a Detached Youthwork project
- Start a town-wide Youth Congregation
- Offer Internship Programs
- To resource youth work around the Parish and town

- To provide peer support and training for local youth and children's workers.

Firm foundations have been laid for youth and children's work. Having invested in Hope House, having a committed volunteer base, a full-time youth worker and having strong partnerships with local schools we have the opportunity and the infrastructure to develop a high-impact ministry of outreach and evangelism amongst children, families and young people in Weymouth.



Now you've read through this parish profile, here's a summary of the kind of person we are looking for:

It assumes the normal expectations for a minister of the gospel who is person of integrity as expressed in the Scriptures, empowered and guided by the Holy Spirit, prayerful and biblically literate, with good communication skills and an ability to relate to different types and ages of people.

We would especially welcome:

- An able teacher and expositor of the Scriptures.
- Someone with a leadership style which is collaborative with ordained and lay colleagues and with other faith leaders, and which enables people to live out their faith as God calls them to do.
- Someone who will train and encourage others and delegate as appropriate.
- A commitment to innovative ministry within and outside the church.
- A passion for reaching people with the good news of Jesus and a desire to encourage the congregations towards mission and outreach.
- A vision for how the church can serve its community
- Strong pastoral skills showing empathy in the experiences of others.
- A commitment to local ecumenism.
- Experience in line managing staff.

COULD THIS BE YOU? IF SO, PLEASE GET IN TOUCH!

This Parish Profile was produced by the people of Radipole & Melcombe Regis with Chickerell, Weymouth, Dorset, finalised in May 2024. To God be the Glory.

APPENDIX A

The Rector's House

39 Icen Road, Radipole, Weymouth



The Rectory is a modern 5-bedroom house with ample parking and a generous rear garden. It is owned by The Cox Trust, the trustees of which are the two Radipole churchwardens and the vicar. It is well-maintained and was extended to the rear for a previous Rector.

The Rectory is a 5-bedroom house comprising:

Ground floor:

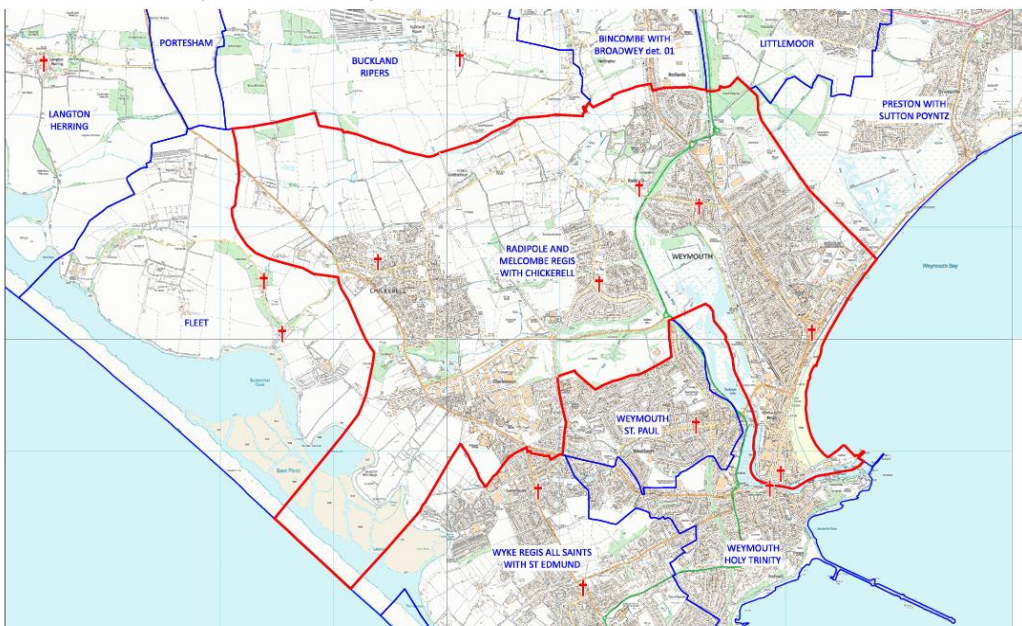
Study: 5m x 5.4m; Cloakroom with toilet; Kitchen 4.8m x 3m; Dining Room 3m x 4m; Living Room 5.3m x 5m.

First Floor: Bedroom 1, 4.7m x 3.2m with dressing area and ensuite shower room; Bedroom 2, 3m x 3.5m; Bedroom 3, 2.9m x 3.7m; Bedroom 4, 2.4m x 2.7m: Bedroom 5, 2.4m x 2.8m. Bathroom and toilet.

There is garage at the front and a garden shed and greenhouse in the private garden which is largely down to lawn, shrubs and a small veggie patch.

APPENDIX B – THE PARISH AND HOW TO GET THERE!

Benefice and Parish of Radipole and Melcombe Regis with Chickerell



This map was compiled for the Diocese of Salisbury by Alistair Sutherland in January 2024 with digital data from Field Dynamics. It contains parish data supplied by the Commissioners of the Church of England, church location data from A Church Near You, and Ordnance Survey data reproduced with the permission of Ordnance Survey on behalf of HMSO. © Crown copyright and database right 2024. All rights reserved. Ordnance Survey licences nos 100040148 and 100019918. Please note that some legal parish names may be abbreviated for clarity.

Travelling to Weymouth

From [http:](http://www.visit-dorset.com/plan-your-visit/travel-information/getting-to-dorset)

www.visit-dorset.com/plan-your-visit/travel-information/getting-to-dorset - an excellent introduction to the area

By Train:

The area is served by an excellent rail network from many principal towns in the UK to local stations throughout Dorset.

[South West Trains](#) offer great discounted fares when you buy your ticket in advance on many longer distance routes to and from London.

Why not take advantage of their [advanced fares offers?](#)

Full conditions of advance tickets are available on the South West Trains [website](#).

You can also buy your ticket [online](#) or at your nearest station call 0845 6000 650.

Plan your journey by [rail](#) and check live [departure times](#).

Direct trains from London depart from Waterloo Station and stop at Bournemouth, Dorchester and Weymouth.

London Waterloo to Exeter St Davids services call at Sherborne and Axminster (for Lyme Regis).

For all rail enquiries visit www.nationalrail.co.uk, [TravelDorset](#) can direct you to further useful information.

By Bus:

[National Express Coaches](#) operate services throughout the country.

By Road:

The following main motorway routes connect the east, ports and London with Dorset: M20 / M26 / M25 / M3 / M27.

The M3/A303 from London to Devon also passes through the northernmost part of Dorset.

<https://www.dorsetcouncil.gov.uk/> provides travel news from Dorset Council.

APPENDIX C – STATISTICS & ACCOUNTS

Population of Weymouth at 55,543 2021 census and in Chickerell a further 6,294.

Electoral Roll 2023

Radipole	St Mary's Town Centre	St John's	Emmanuel	St Mary's Chickerell	Total
212	34	124	67	38	437

Parish Share for 2023 Full financial statement available on request

Radipole	St Mary's Town Centre	St John's	Emmanuel	St Mary's Chickerell	Total
£112,819	£17,055	£ 43,799	£30,246	£ 18,409	£ 222,328

Average Attendance at Sunday morning services 2023

Radipole	St Mary's Town Centre	St John's	Emmanuel	St Mary's Chickerell
150	28	145	50	22

Occasional offices

2023	Radipole	St Mary's Town Centre	St John's	Emmanuel	St Mary's Chickerell
Thanksgiving	8	0	0	2	0
Baptism	9	2	3	2	3
Confirmations	0	0	0	2	0
Weddings	2	0	3	0	2
Funerals	29	1	13	7	11
Burial of Ashes	4	NA	NA	NA	6

APPENDIX D - PARISH SERVICE MATRIX

Weekly Service Times

	St Aldhelm's	St Ann's	St Mary's Town Centre	St John's	Emmanuel	St Mary's Chickerell
Sunday	Breakfast@9		9am Breakfast Church	The 9am	The 9.30	9.30am
Sunday	10.30am	10.30am	11am	The 10.30	The TEN45	
Sunday	Encounter 6.30pm Monthly			Praise, Prayer & Healing 6.30pm Monthly	6:00pm Meditative (4-6 times a year)	
Monday	8.45am Morning Prayer					
Tuesday	10.00am Holy Communion				8.30am – Morning Prayer 9.30am – Holy Communion	
Thursday		8.45am Morning Prayer				8.30am – Morning Prayer 10am - Holy Communion (1 st Thursday of month)
Friday						
Saturday						

